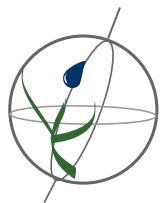


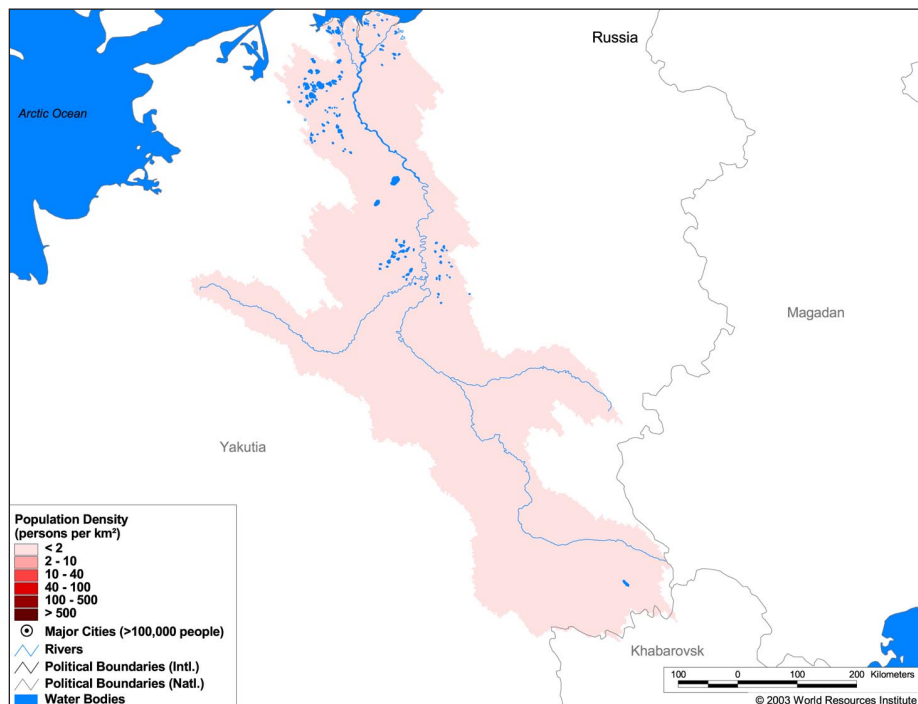
Land Cover and Use Variables

Percent Forest Cover:	2.4
Percent Grassland, Savanna and Shrubland:	69.7
Percent Wetlands:	3.0
Percent Cropland:	0.0
Percent Irrigated Cropland:	0.0
Percent Dryland Area:	0.0
Percent Urban and Industrial Area:	0.1
Percent Loss of Original Forest Cover:	52.2



Basin Indicators

Basin Area (sq. km):	274,818
Average Population Density (people per sq. km):	< 1
Number of Large Cities (>100,000 people):	0
Water Supply per Person (1995)(m ³ /year):	973,515
Degree of River Fragmentation:	Low
Number of Dams (>15m high) in Basin:	0
Number of Dams (>150m high) in Basin:	0
Number of Dams (>60m high) under Construction:	0
Number of Dams (>15m high) on Main Stem of River:	0
Number of Dams (>150m high) on Main Stem of River:	0



Biodiversity Information and Indicators

Number of Fish Species:	-
Number of Fish Endemics:	-
Number of Amphibian Species:	-
Number of Ramsar Sites:	0
Number of Wetland-Dependent IBAs:	-
Number of Endemic Bird Areas:	0
Percent Protected Area:	0.0

