

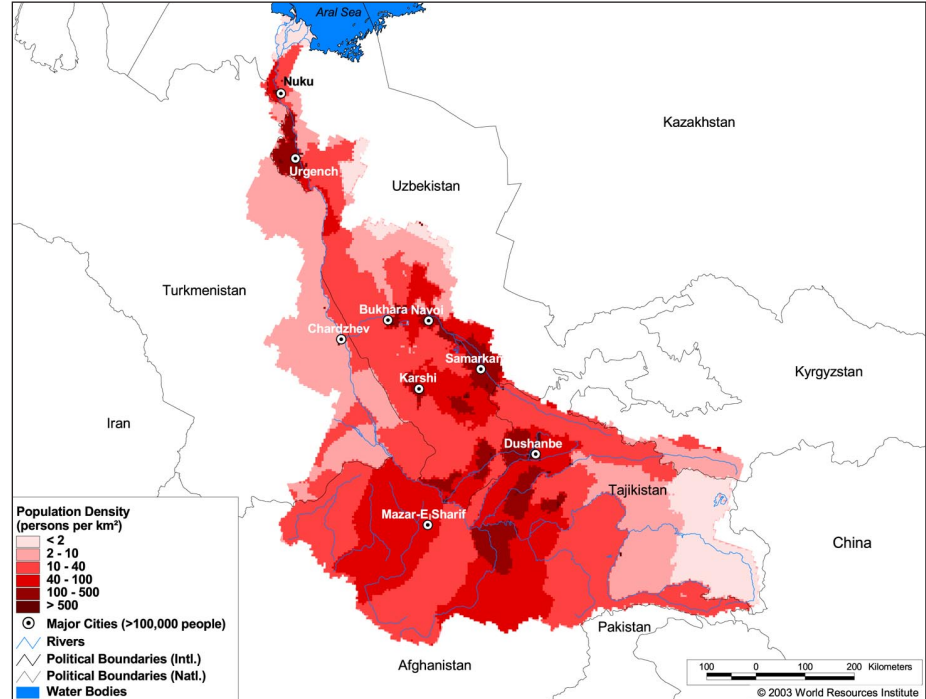
### Land Cover and Use Variables

Percent Forest Cover:	0.1
Percent Grassland, Savanna and Shrubland:	57.3
Percent Wetlands:	0.0
Percent Cropland:	22.4
Percent Irrigated Cropland:	7.5
Percent Dryland Area:	77.8
Percent Urban and Industrial Area:	3.7
Percent Loss of Original Forest Cover:	98.6



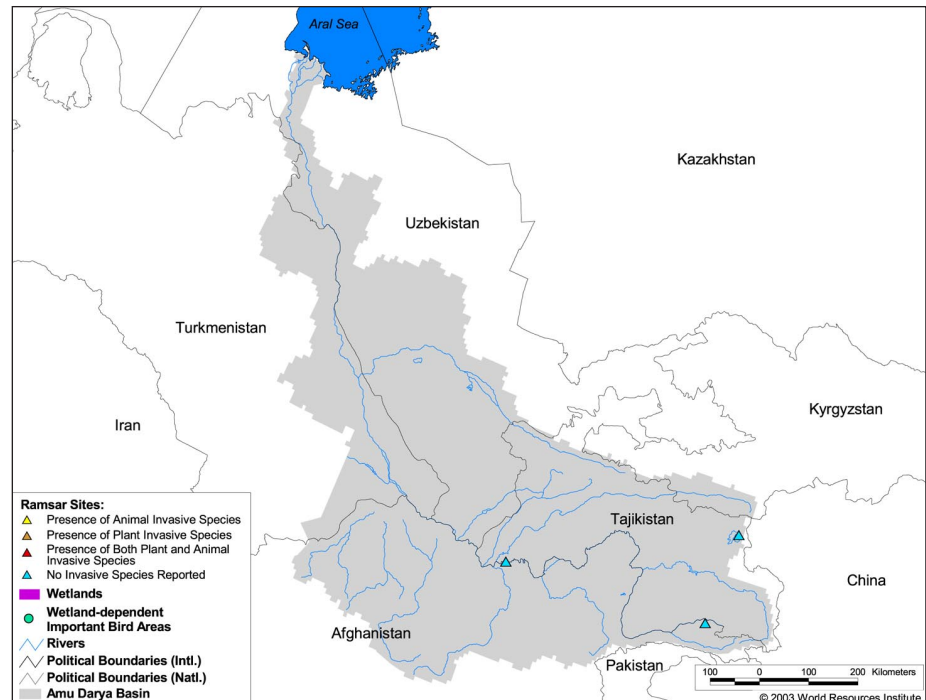
### Basin Indicators

Basin Area (sq. km):	534,739
Average Population Density (people per sq. km):	39
Number of Large Cities (>100,000 people):	9
Water Supply per Person (1995)(m <sup>3</sup> /year):	3,211
Degree of River Fragmentation:	High
Number of Dams (>15m high) in Basin:	6
Number of Dams (>150m high) in Basin:	-
Number of Dams (>60m high) under Construction:	2
Number of Dams (>15m high) on Main Stem of River:	-
Number of Dams (>150m high) on Main Stem of River:	-



### Biodiversity Information and Indicators

Number of Fish Species:	68
Number of Fish Endemics:	3
Number of Amphibian Species:	2
Number of Ramsar Sites:	1
Number of Wetland-Dependent IBAs:	-
Number of Endemic Bird Areas:	0
Percent Protected Area:	0.7



Interstate Commission for Water Coordination (ICWC): <http://www.icwc-aral.uz/>