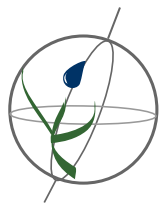


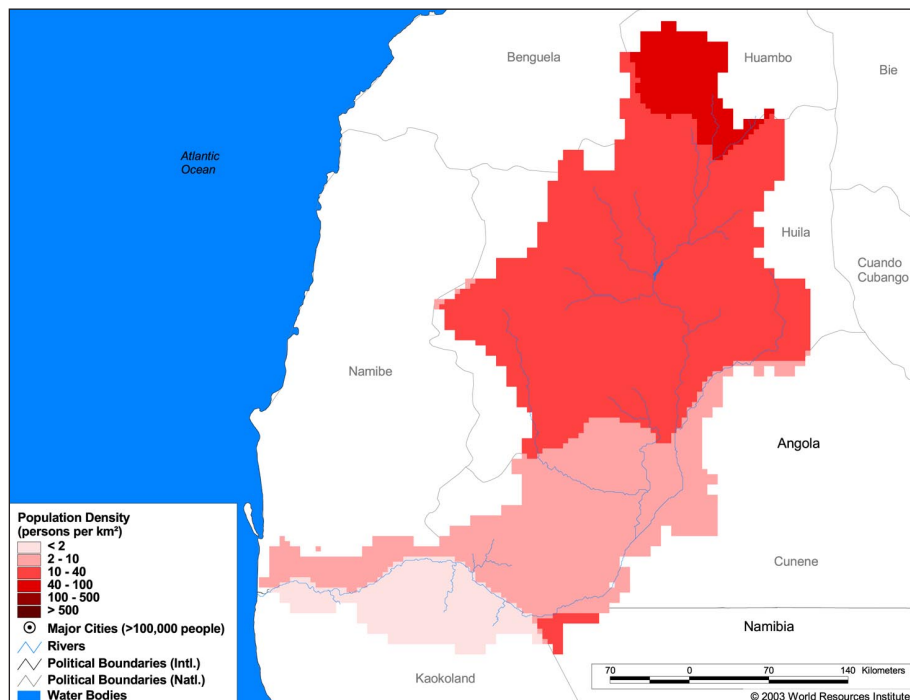
Land Cover and Use Variables

Percent Forest Cover:	3.3
Percent Grassland, Savanna and Shrubland:	90.9
Percent Wetlands:	2.9
Percent Cropland:	2.6
Percent Irrigated Cropland:	0.1
Percent Dryland Area:	30.9
Percent Urban and Industrial Area:	0.1
Percent Loss of Original Forest Cover:	-



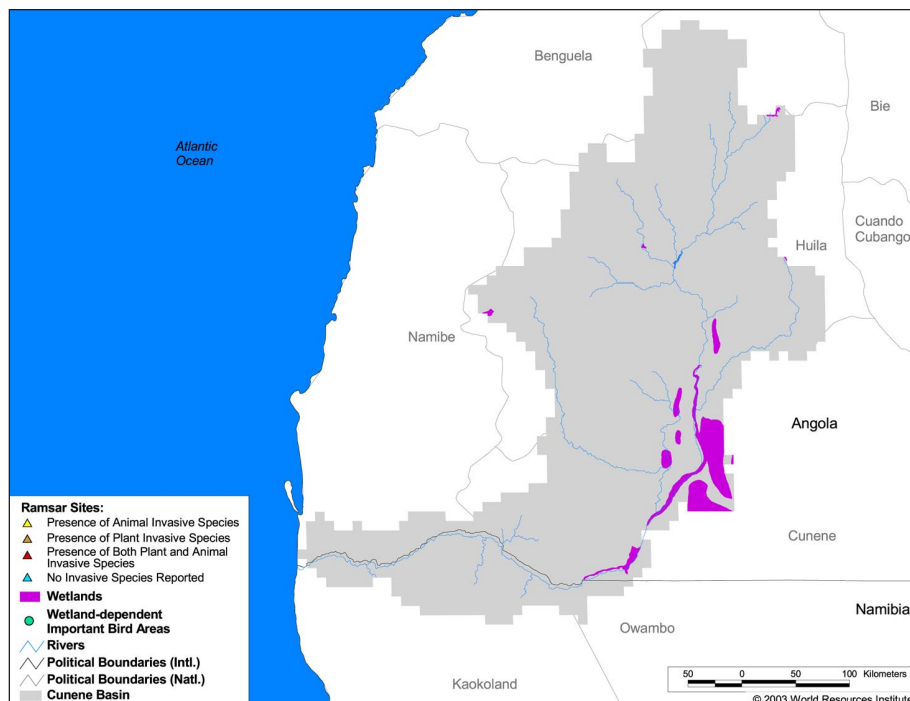
Basin Indicators

Basin Area (sq. km.):	109,832
Average Population Density (people per sq. km.):	10
Number of Large Cities (>100,000 people):	0
Water Supply per Person (1995)(m ³ /year):	13,216
Degree of river fragmentation:	-
Number of Dams (>15m high) in Basin:	2
Number of Dams (>150m high) in Basin:	0
Number of Dams (>60m high) under Construction:	0
Number of Dams (>15m high) on Main Stem of River:	2
Number of Dams (>150m high) on Main Stem of River:	0



Biodiversity Information and Indicators

Number of Fish Species:	-
Number of Fish Endemics:	-
Number of Amphibian Species:	45
Number of Ramsar Sites:	0
Number of Wetland-Dependent IBAs:	0
Number of Endemic Bird Areas:	-
Percent Protected Area:	-



World Commission on Dams Case Study on the Proposed Epupa Hydro Power Dam in the Cunene River:
<http://www.damsreport.org/docs/kbase/contrib/ins103.pdf>