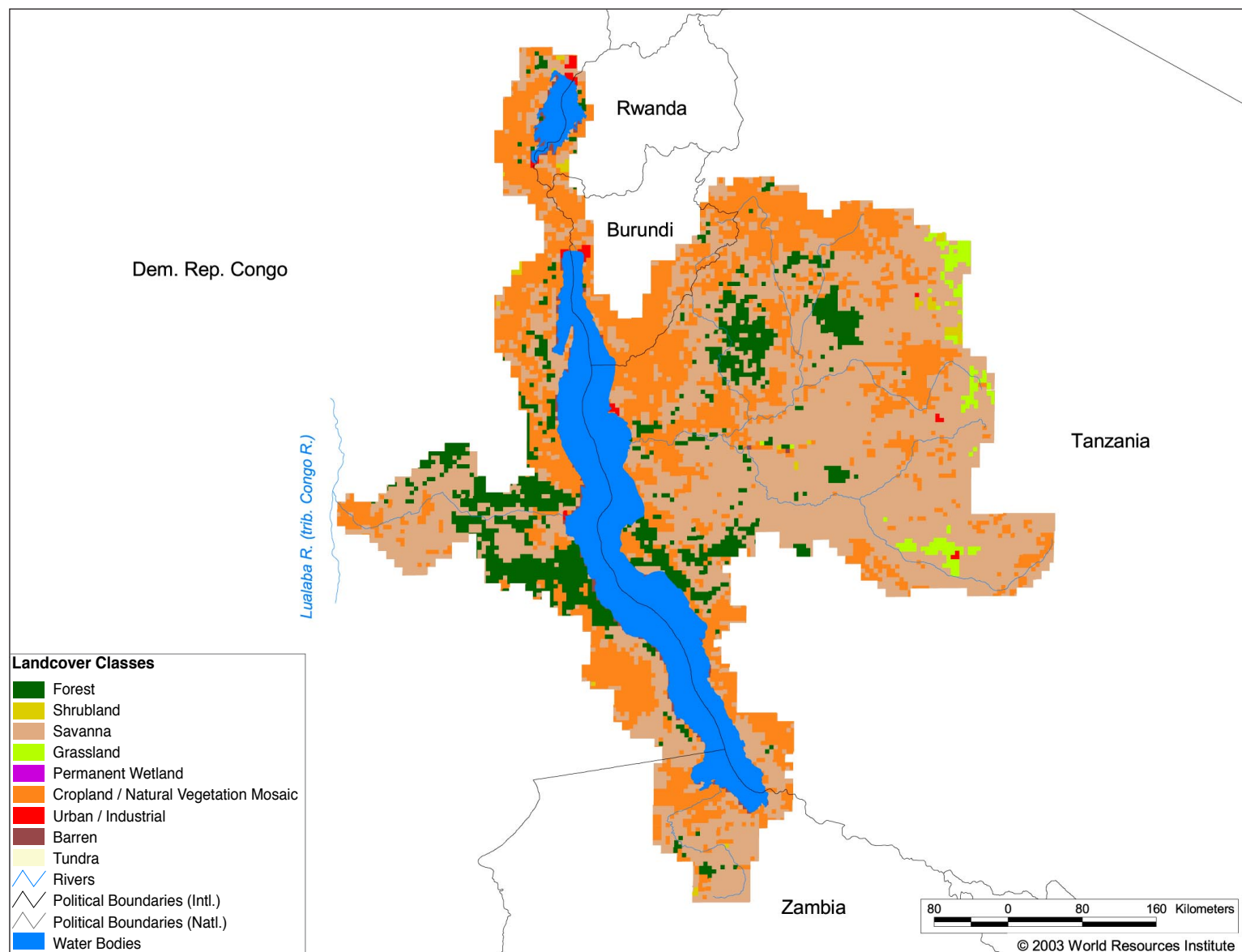


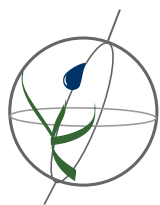
# Watersheds of Africa

## A02 Congo I Lake Tanganyika



### Land Cover and Use Variables

Percent Forest Cover:	9.2
Percent Grassland, Savanna and Shrubland:	54.5
Percent Wetlands:	18.0
Percent Cropland:	30.6
Percent Irrigated Cropland:	0.0
Percent Dryland Area:	-
Percent Urban and Industrial Area:	< 1.0
Percent Loss of Original Forest Cover:	59.3

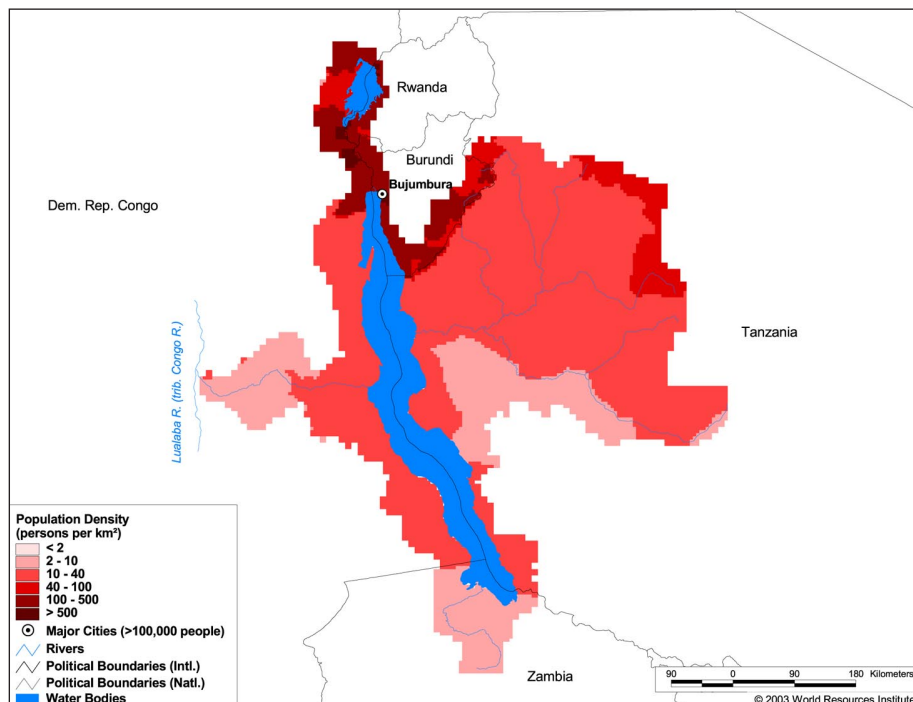


# Watersheds of Africa

## A02 Congo I Lake Tanganyika

### Basin Indicators

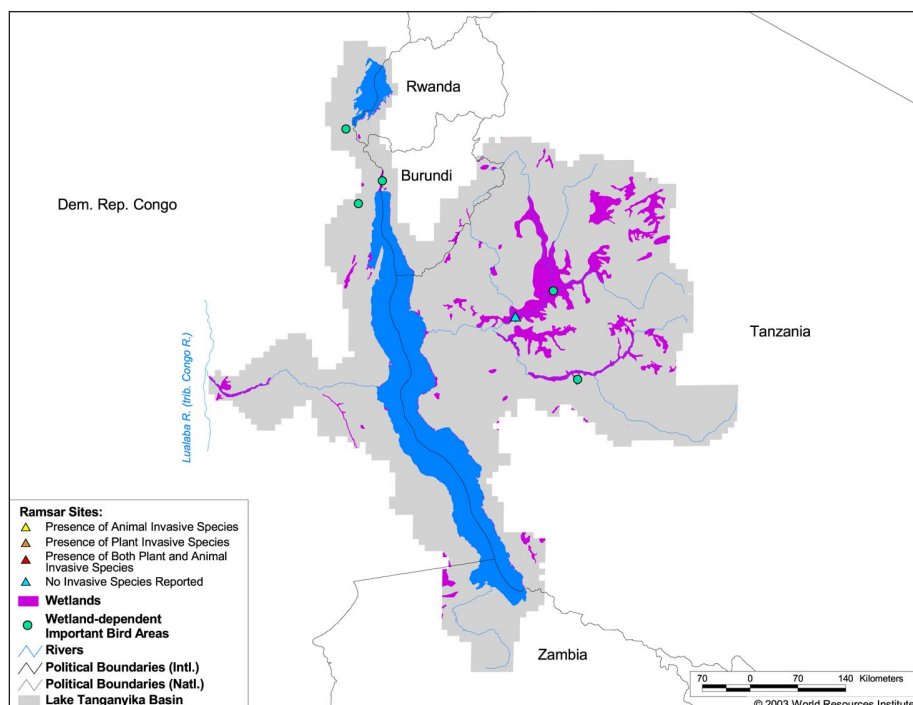
Basin Area (sq. km.):	273,156
Average Population Density (people per sq. km.):	41
Number of Large Cities (>100,000 people):	1
Water Supply per Person (1995)(m <sup>3</sup> /year):	> 10,000
Degree of river fragmentation:	-
Number of Dams (>15m high) in Basin:	0
Number of Dams (>150m high) in Basin:	0
Number of Dams (>60m high) under Construction:	0
Number of Dams (>15m high) on Main Stem of River:	0
Number of Dams (>150m high) on Main Stem of River:	0



### Biodiversity Information and Indicators

Number of Fish Species:	308
Number of Fish Endemics:	238
Number of Amphibian Species:	96
Number of Ramsar Sites:	1
Number of Wetland-Dependent IBAs:	5
Number of Endemic Bird Areas:	4
Percent Protected Area:	8.9

Currently the fish fauna for Lake Tanganyika comprises 20 families, 103 genera and 308 species. Fish endemics to this lake and basin include 57 genera (49 in *Cichlidae*) and 238 species (193 in *Cichlidae*).



Lake Tanganyika Biodiversity Project: <http://www.ltbp.org/>  
 Lake Tanganyika Research Project: <http://www.fao.org/fi/ltr/index.htm>