

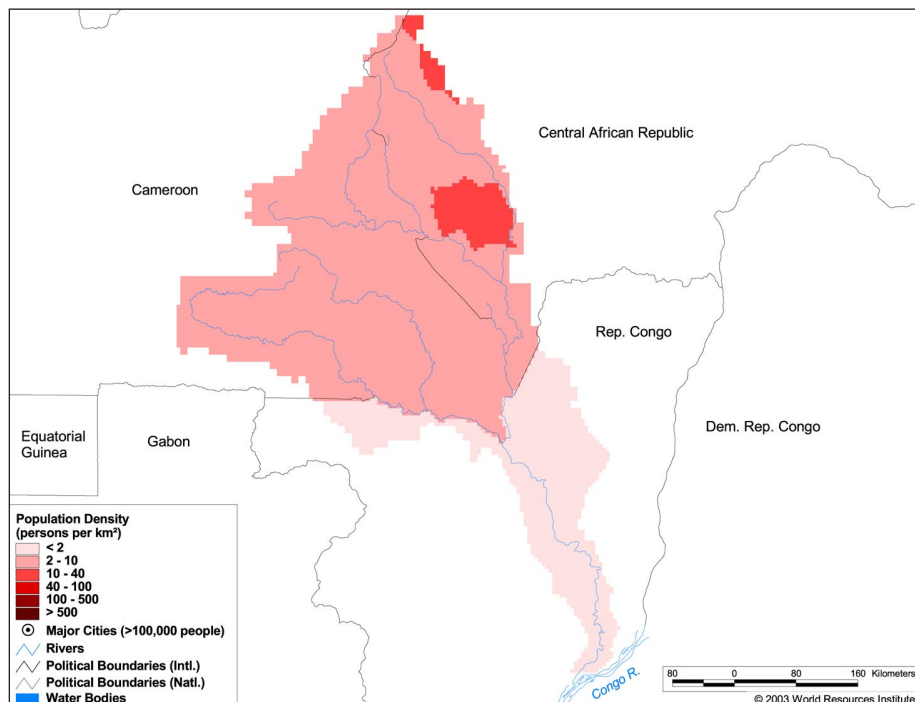
### Land Cover and Use Variables

|   |      |
|---|------|
| Percent Forest Cover:                     | 64.0 |
| Percent Grassland, Savanna and Shrubland: | 34.0 |
| Percent Wetlands:                         | 11.0 |
| Percent Cropland:                         | 0.6  |
| Percent Irrigated Cropland:               | 0.0  |
| Percent Dryland Area:                     | -    |
| Percent Urban and Industrial Area:        | 0.2  |
| Percent Loss of Original Forest Cover:    | 30.1 |



### Basin Indicators

|   |          |
|---|----------|
| Basin Area (sq. km.):                                 | 180,418  |
| Average Population Density (people per sq. km.):      | 4        |
| Number of Large Cities (>100,000 people):             | 0        |
| Water Supply per Person (1995(m <sup>3</sup> /year)): | > 10,000 |
| Degree of river fragmentation:                        | -        |
| Number of Dams (>15m high) in Basin:                  | 0        |
| Number of Dams (>150m high) in Basin:                 | 0        |
| Number of Dams (>60m high) under Construction:        | 0        |
| Number of Dams (>15m high) on Main Stem of River:     | 0        |
| Number of Dams (>150m high) on Main Stem of River:    | 0        |



### Biodiversity Information and Indicators

|                                   |     |
|-----------------------------------|-----|
| Number of Fish Species:           | -   |
| Number of Fish Endemics:          | -   |
| Number of Amphibian Species:      | 83  |
| Number of Ramsar Sites:           | 0   |
| Number of Wetland-Dependent IBAs: | 3   |
| Number of Endemic Bird Areas:     | 1   |
| Percent Protected Area:           | 6.8 |

