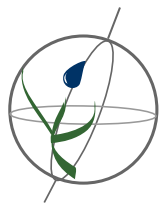


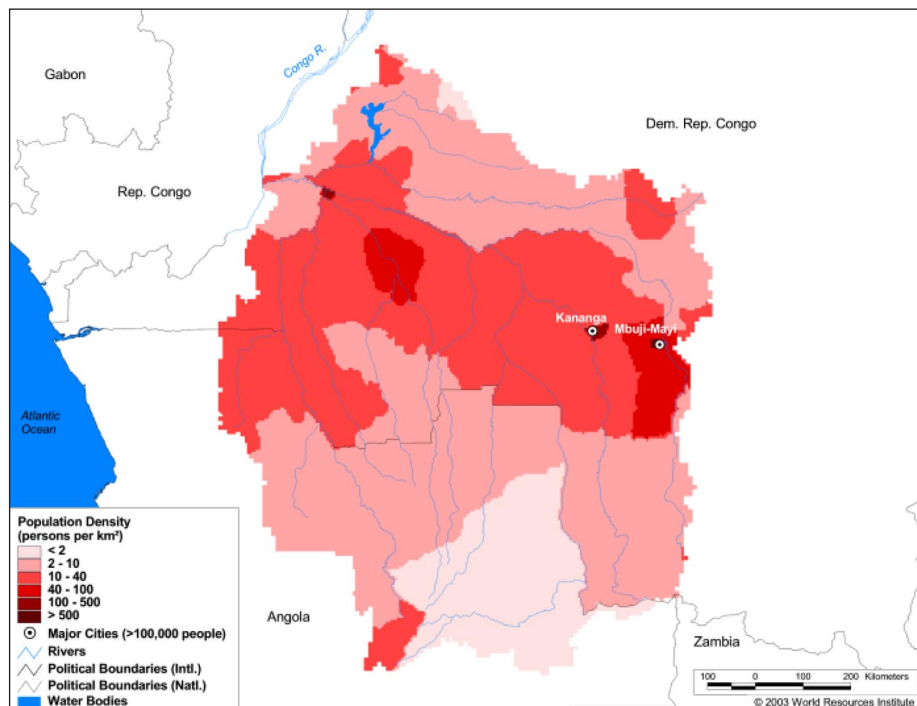
## Land Cover and Use Variables

Percent Forest Cover:	39.6
Percent Grassland, Savanna and Shrubland:	55.7
Percent Wetlands:	3.2
Percent Cropland:	3.0
Percent Irrigated Cropland:	0.0
Percent Dryland Area:	-
Percent Urban and Industrial Area:	0.2
Percent Loss of Original Forest Cover:	66.4



### Basin Indicators

Basin Area (sq. km.):	925,172
Average Population Density (people per sq. km.):	14
Number of Large Cities (>100,000 people):	2
Water Supply per Person (1995)(m <sup>3</sup> /year):	> 10,000
Degree of river fragmentation:	-
Number of Dams (>15m high) in Basin:	1
Number of Dams (>150m high) in Basin:	0
Number of Dams (>60m high) under Construction:	0
Number of Dams (>15m high) on Main Stem of River:	0
Number of Dams (>150m high) on Main Stem of River:	0



### Biodiversity Information and Indicators

Number of Fish Species:	129
Number of Fish Endemics:	-
Number of Amphibian Species:	91
Number of Ramsar Sites:	0
Number of Wetland-Dependent IBAs:	2
Number of Endemic Bird Areas:	0
Percent Protected Area:	2.3

