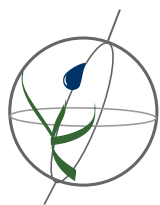


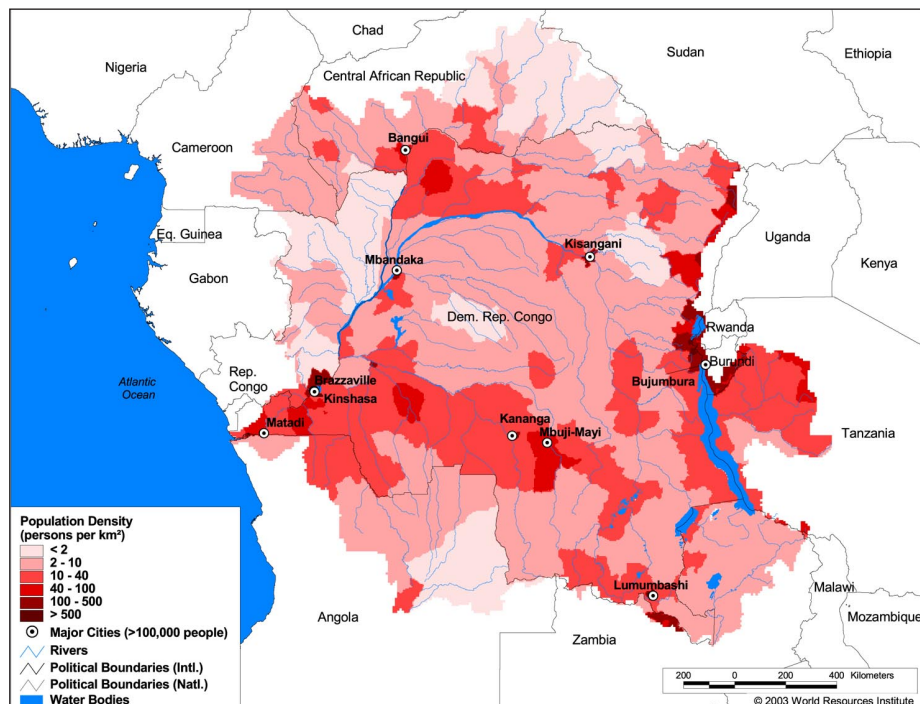
Land Cover and Use Variables

Percent Forest Cover:	44.0
Percent Grassland, Savanna and Shrubland:	45.4
Percent Wetlands:	9.0
Percent Cropland:	7.2
Percent Irrigated Cropland:	0.0
Percent Dryland Area:	0.2
Percent Urban and Industrial Area:	0.2
Percent Loss of Original Forest Cover:	45.8



Basin Indicators

Basin Area (sq. km.):	3,730,881
Average Population Density (people per sq. km.):	15
Number of Large Cities (>100,000 people):	18
Water Supply per Person (1995)(m ³ /year):	22,752
Degree of river fragmentation:	Medium
Number of Dams (>15m high) in Basin:	11
Number of Dams (>150m high) in Basin:	0
Number of Dams (>60m high) under Construction:	0
Number of Dams (>15m high) on Main Stem of River:	6
Number of Dams (>150m high) on Main Stem of River:	0



Biodiversity Information and Indicators

Number of Fish Species:	700
Number of Fish Endemics:	500
Number of Amphibian Species:	227
Number of Ramsar Sites:	4
Number of Wetland-Dependent IBAs:	21
Number of Endemic Bird Areas:	6
Percent Protected Area:	4.7

