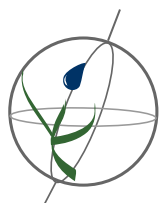


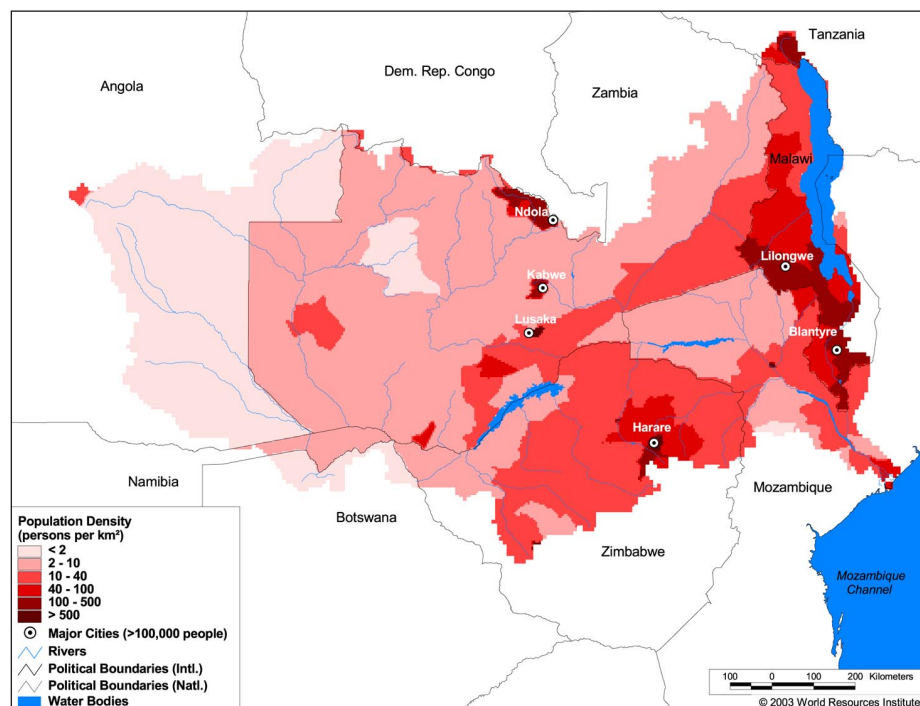
Land Cover and Use Variables

Percent Forest Cover:	4.0
Percent Grassland, Savanna and Shrubland:	72.0
Percent Wetlands:	7.6
Percent Cropland:	19.9
Percent Irrigated Cropland:	0.1
Percent Dryland Area:	31.9
Percent Urban and Industrial Area:	0.7
Percent Loss of Original Forest Cover:	42.8



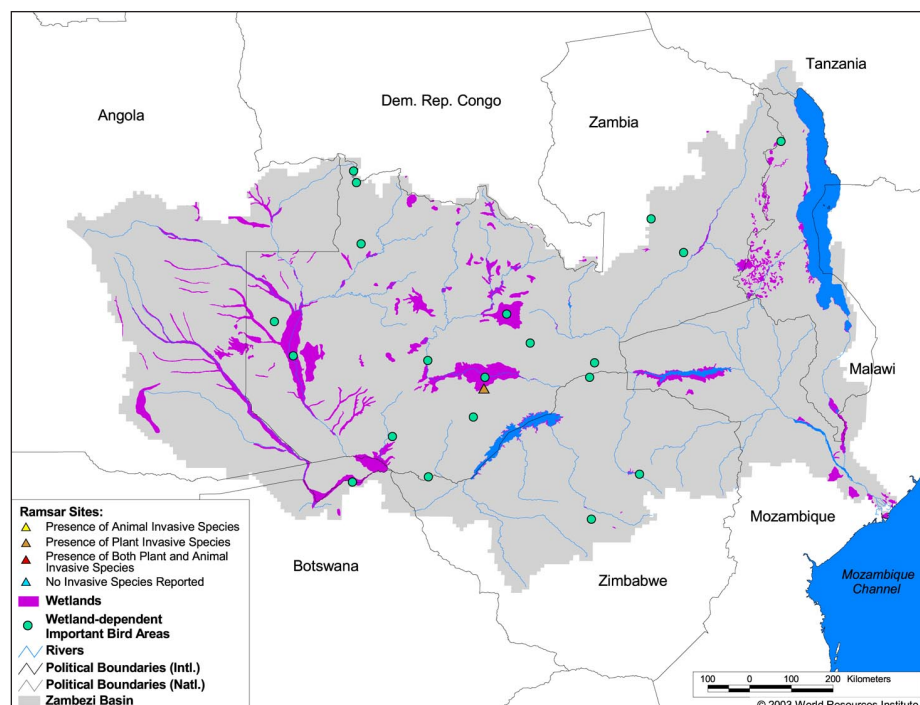
Basin Indicators

Basin Area (sq. km.):	1,332,412
Average Population Density (people per sq. km.):	18
Number of Large Cities (>100,000 people):	6
Water Supply per Person (1995)(m ³ /year):	> 10,000
Degree of river fragmentation:	High
Number of Dams (>15m high) in Basin:	12
Number of Dams (>150m high) in Basin:	1
Number of Dams (>60m high) under Construction:	0
Number of Dams (>15m high) on Main Stem of River:	2
Number of Dams (>150m high) on Main Stem of River:	1



Biodiversity Information and Indicators

Number of Fish Species:	122
Number of Fish Endemics:	25
Number of Amphibian Species:	141
Number of Ramsar Sites:	1
Number of Wetland-Dependent IBAs:	21
Number of Endemic Bird Areas:	3
Percent Protected Area:	7.9



State of the Environment Zambezi Basin 2000:
<http://www.sardc.net/imercsa/zambezi/zambezi2000/summary/index.html>
 Zambezi River Authority: <http://www.zaraho.org.zm/>