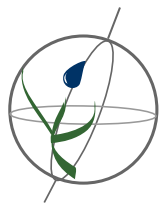


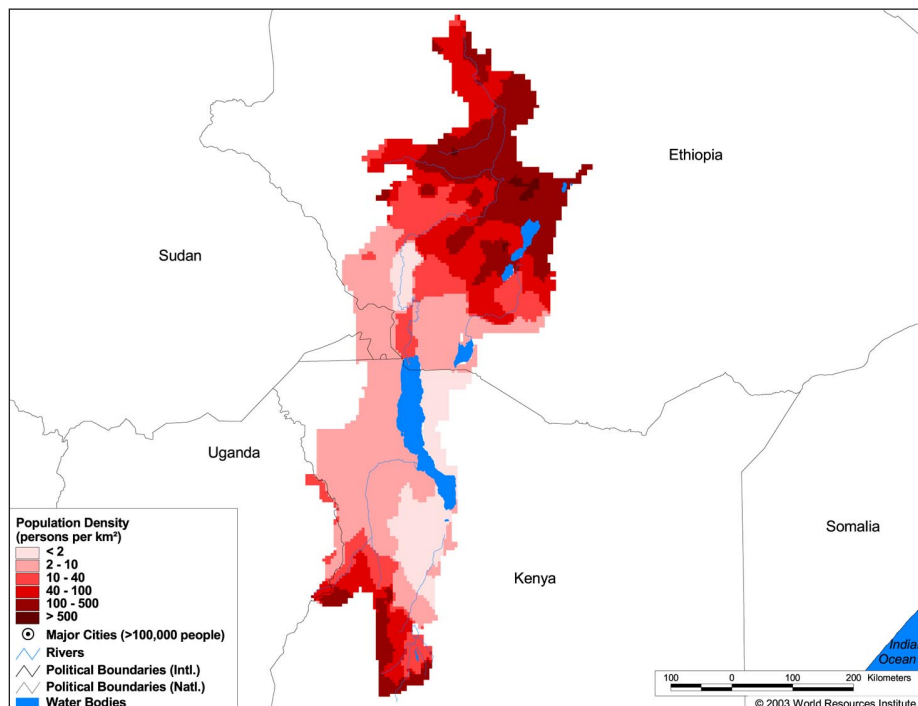
Land Cover and Use Variables

Percent Forest Cover:	11.9
Percent Grassland, Savanna and Shrubland:	50.2
Percent Wetlands:	5.9
Percent Cropland:	20.8
Percent Irrigated Cropland:	0.3
Percent Dryland Area:	42.4
Percent Urban and Industrial Area:	0.1
Percent Loss of Original Forest Cover:	59.6



Basin Indicators

Basin Area (sq. km.):	209,096
Average Population Density (people per sq. km.):	61
Number of Large Cities (>100,000 people):	0
Water Supply per Person (1995)(m ³ /year):	4,450
Degree of river fragmentation:	-
Number of Dams (>15m high) in Basin:	1
Number of Dams (>150m high) in Basin:	0
Number of Dams (>60m high) under Construction:	0
Number of Dams (>15m high) on Main Stem of River:	0
Number of Dams (>150m high) on Main Stem of River:	0



Biodiversity Information and Indicators

Number of Fish Species:	47
Number of Fish Endemics:	17
Number of Amphibian Species:	51
Number of Ramsar Sites:	2
Number of Wetland-Dependent IBAs:	7
Number of Endemic Bird Areas:	3
Percent Protected Area:	8.6

