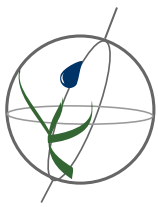


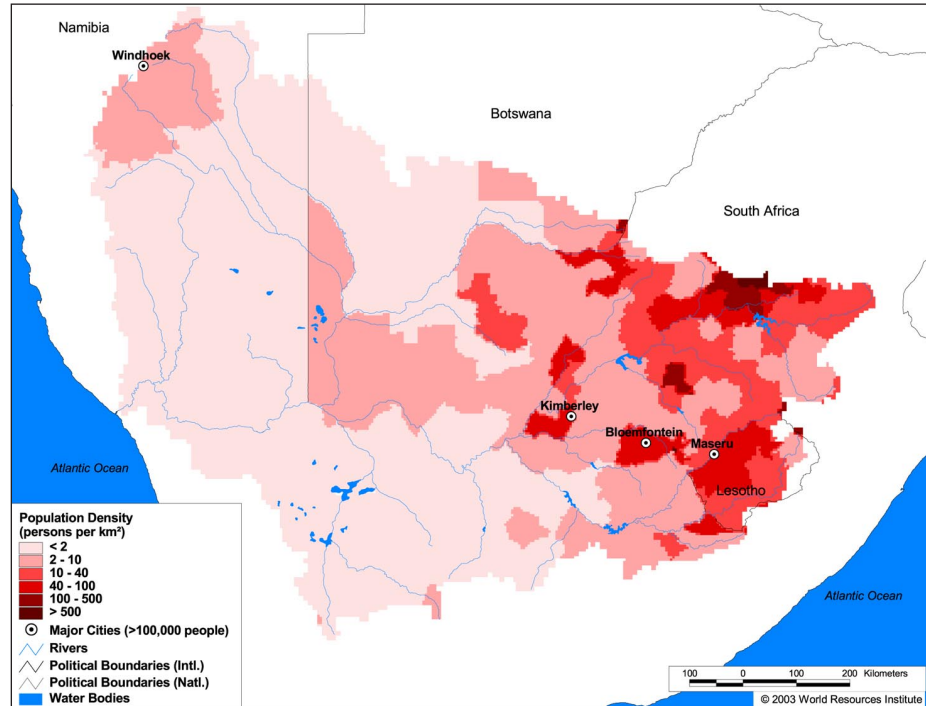
Land Cover and Use Variables

Percent Forest Cover:	0.2
Percent Grassland, Savanna and Shrubland:	85.0
Percent Wetlands:	0.8
Percent Cropland:	6.0
Percent Irrigated Cropland:	0.5
Percent Dryland Area:	82.8
Percent Urban and Industrial Area:	2.2
Percent Loss of Original Forest Cover:	99.9



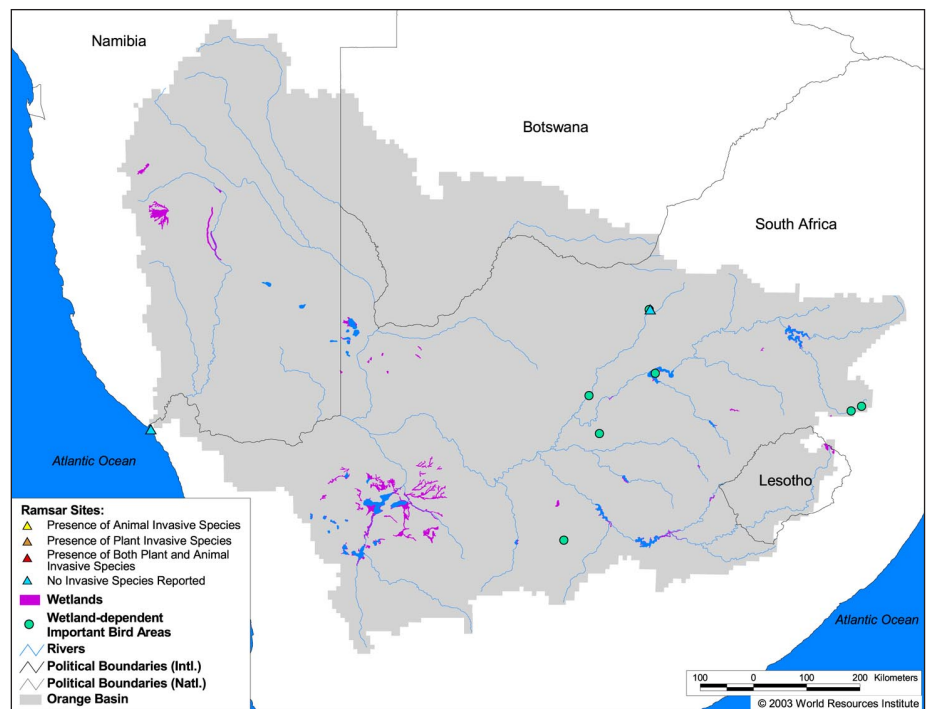
Basin Indicators

Basin Area (sq. km.):	941,351
Average Population Density (people per sq. km.):	10
Number of Large Cities (>100,000 people):	4
Water Supply per Person (1995)(m ³ /year):	1,050
Degree of river fragmentation:	High
Number of Dams (>15m high) in Basin:	37
Number of Dams (>150m high) in Basin:	1
Number of Dams (>60m high) under Construction:	1
Number of Dams (>15m high) on Main Stem of River:	2
Number of Dams (>150m high) on Main Stem of River:	0



Biodiversity Information and Indicators

Number of Fish Species:	24
Number of Fish Endemics:	7
Number of Amphibian Species:	42
Number of Ramsar Sites:	2
Number of Wetland-Dependent IBAs:	7
Number of Endemic Bird Areas:	2
Percent Protected Area:	4.7



SADC - Orange River Basin Commission: <http://www.sadcwscu.org.ls/>