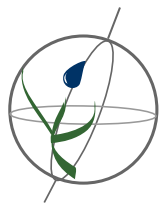


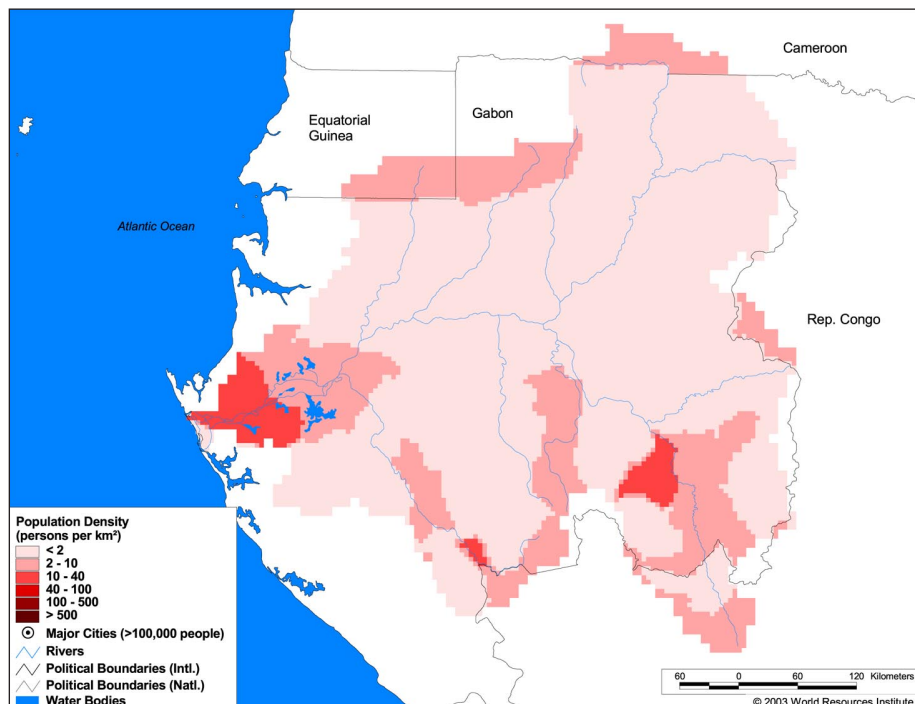
Land Cover and Use Variables

Percent Forest Cover:	75.1
Percent Grassland, Savanna and Shrubland:	21.7
Percent Wetlands:	6.2
Percent Cropland:	0.8
Percent Irrigated Cropland:	0.0
Percent Dryland Area:	0.0
Percent Urban and Industrial Area:	0.5
Percent Loss of Original Forest Cover:	8.8



Basin Indicators

Basin Area (sq. km.):	223,946
Average Population Density (people per sq. km.):	2
Number of Large Cities (>100,000 people):	0
Water Supply per Person (1995)(m ³ /year):	289,401
Degree of river fragmentation:	-
Number of Dams (>15m high) in Basin:	-
Number of Dams (>150m high) in Basin:	-
Number of Dams (>60m high) under Construction:	0
Number of Dams (>15m high) on Main Stem of River:	-
Number of Dams (>150m high) on Main Stem of River:	-



Biodiversity Information and Indicators

Number of Fish Species:	-
Number of Fish Endemics:	-
Number of Amphibian Species:	73
Number of Ramsar Sites:	1
Number of Wetland-Dependent IBAs:	2
Number of Endemic Bird Areas:	1
Percent Protected Area:	3.5

