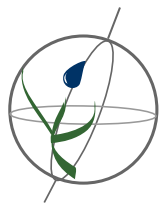


Land Cover and Use Variables

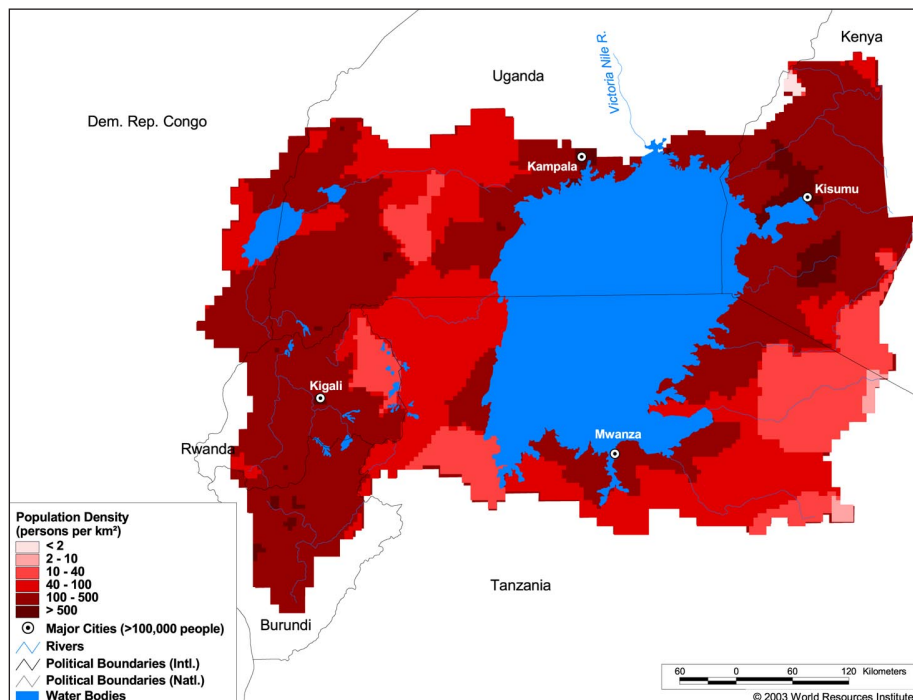
Percent Forest Cover:	8.5
Percent Grassland, Savanna and Shrubland:	37.0
Percent Wetlands:	40.8
Percent Cropland:	40.3
Percent Irrigated Cropland:	0.0
Percent Dryland Area:	-
Percent Urban and Industrial Area:	1.0
Percent Loss of Original Forest Cover:	88.5



Watersheds of Africa A10 Nile I Lake Victoria

Basin Indicators

Basin Area (sq. km.):	283,168
Average Population Density (people per sq. km.):	166
Number of Large Cities (>100,000 people):	4
Water Supply per Person (1995)(m ³ /year):	1,700-4,000
Degree of river fragmentation:	-
Number of Dams (>15m high) in Basin:	1
Number of Dams (>150m high) in Basin:	0
Number of Dams (>60m high) under Construction:	0
Number of Dams (>15m high) on Main Stem of River:	0
Number of Dams (>150m high) on Main Stem of River:	0



Biodiversity Information and Indicators

Number of Fish Species:	343
Number of Fish Endemics:	309
Number of Amphibian Species:	79
Number of Ramsar Sites:	2
Number of Wetland-Dependent IBAs:	39
Number of Endemic Bird Areas:	4
Percent Protected Area:	17.0

