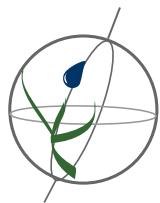


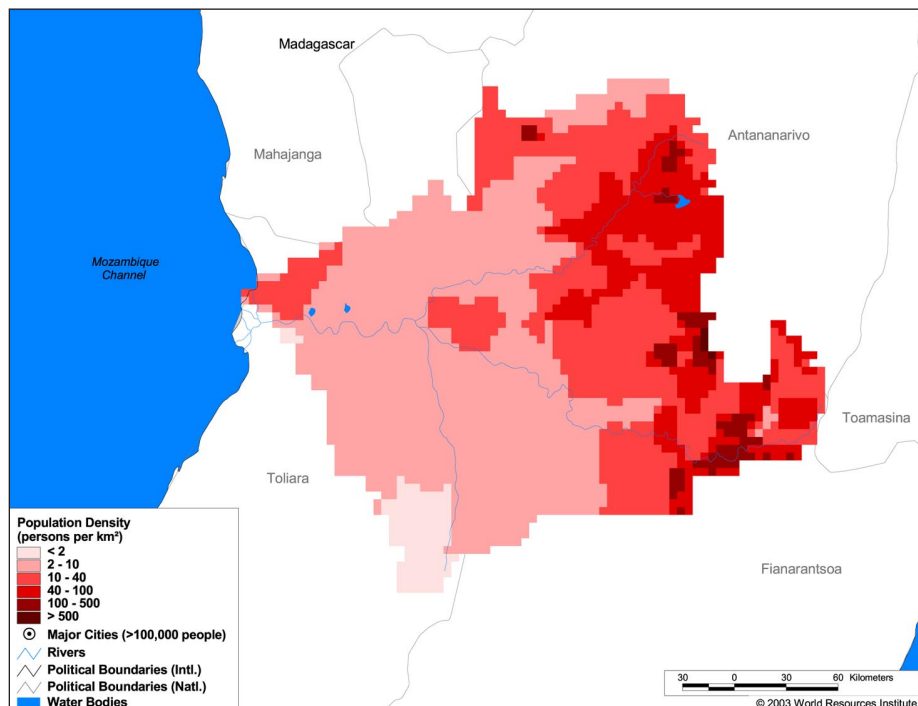
Land Cover and Use Variables

Percent Forest Cover:	5.7
Percent Grassland, Savanna and Shrubland:	89.8
Percent Wetlands:	0.9
Percent Cropland:	2.5
Percent Irrigated Cropland:	2.6
Percent Dryland Area:	1.0
Percent Urban and Industrial Area:	0.2
Percent Loss of Original Forest Cover:	98.1



Basin Indicators

Basin Area (sq. km.):	56,118
Average Population Density (people per sq. km.):	25
Number of Large Cities (>100,000 people):	0
Water Supply per Person (1995)(m ³ /year):	25,913
Degree of river fragmentation:	Low
Number of Dams (>15m high) in Basin:	0
Number of Dams (>150m high) in Basin:	0
Number of Dams (>60m high) under Construction:	0
Number of Dams (>15m high) on Main Stem of River:	0
Number of Dams (>150m high) on Main Stem of River:	0



Biodiversity Information and Indicators

Number of Fish Species:	-
Number of Fish Endemics:	-
Number of Amphibian Species:	-
Number of Ramsar Sites:	0
Number of Wetland-Dependent IBAs:	1
Number of Endemic Bird Areas:	4
Percent Protected Area:	0.0

