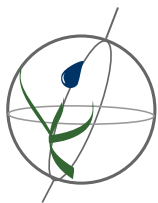


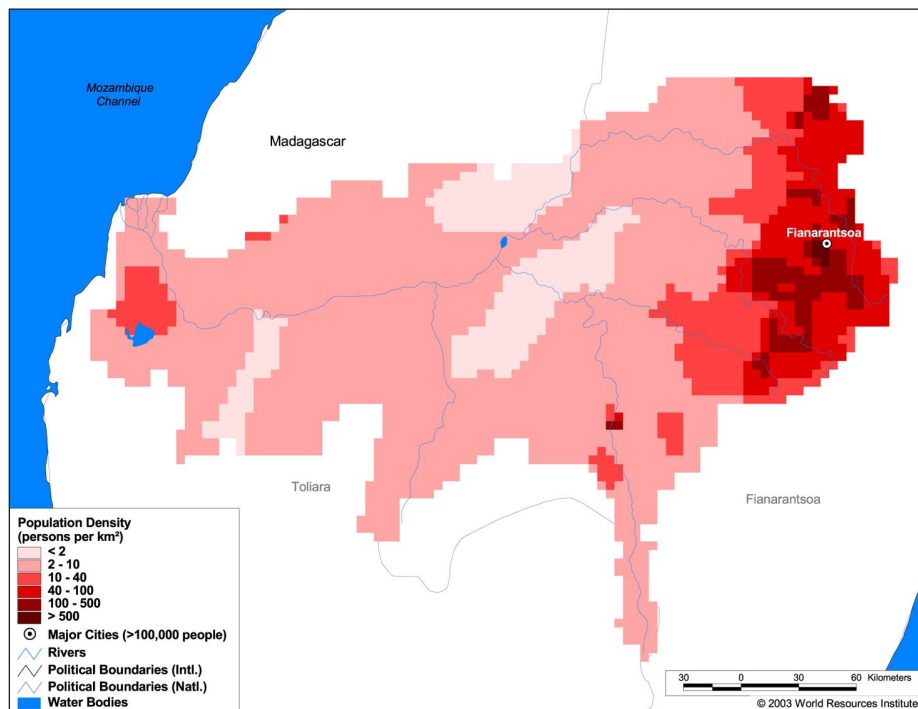
Land Cover and Use Variables

Percent Forest Cover:	3.3
Percent Grassland, Savanna and Shrubland:	90.8
Percent Wetlands:	0.2
Percent Cropland:	4.5
Percent Irrigated Cropland:	2.3
Percent Dryland Area:	50.5
Percent Urban and Industrial Area:	0.1
Percent Loss of Original Forest Cover:	97.2



Basin Indicators

Basin Area (sq. km.):	58,851
Average Population Density (people per sq. km.):	18
Number of Large Cities (>100,000 people):	1
Water Supply per Person (1995)(m ³ /year):	19,059
Degree of river fragmentation:	Low
Number of Dams (>15m high) in Basin:	0
Number of Dams (>150m high) in Basin:	0
Number of Dams (>60m high) under Construction:	0
Number of Dams (>15m high) on Main Stem of River:	0
Number of Dams (>150m high) on Main Stem of River:	0



Biodiversity Information and Indicators

Number of Fish Species:	8
Number of Fish Endemics:	0
Number of Amphibian Species:	-
Number of Ramsar Sites:	0
Number of Wetland-Dependent IBAs:	1
Number of Endemic Bird Areas:	5
Percent Protected Area:	1.3

