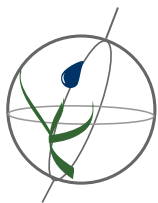


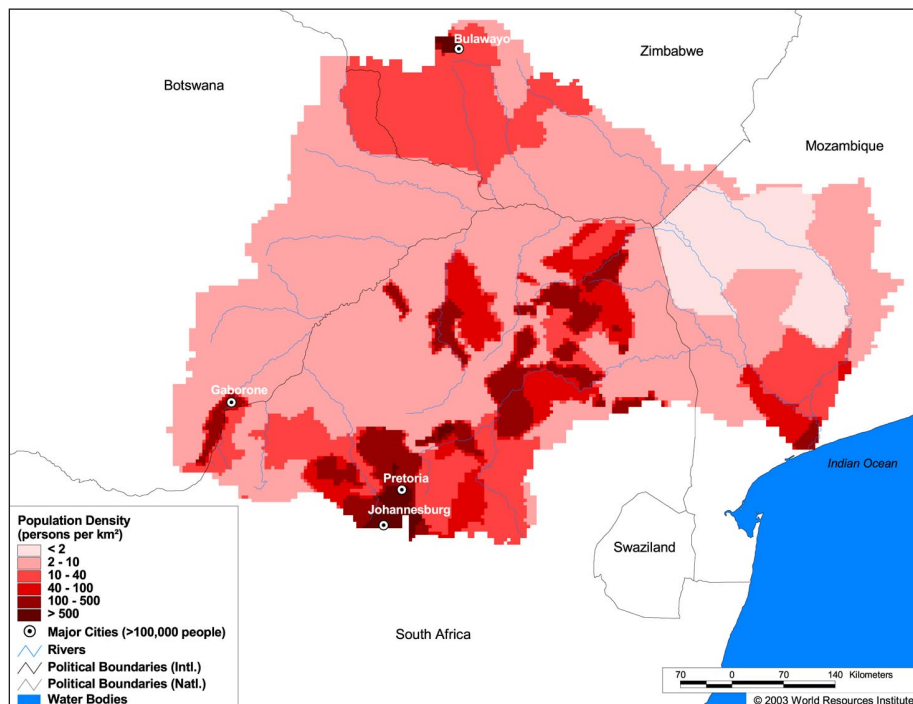
## Land Cover and Use Variables

Percent Forest Cover:	0.7
Percent Grassland, Savanna and Shrubland:	67.7
Percent Wetlands:	2.8
Percent Cropland:	26.3
Percent Irrigated Cropland:	0.9
Percent Dryland Area:	82.5
Percent Urban and Industrial Area:	4.5
Percent Loss of Original Forest Cover:	99.0



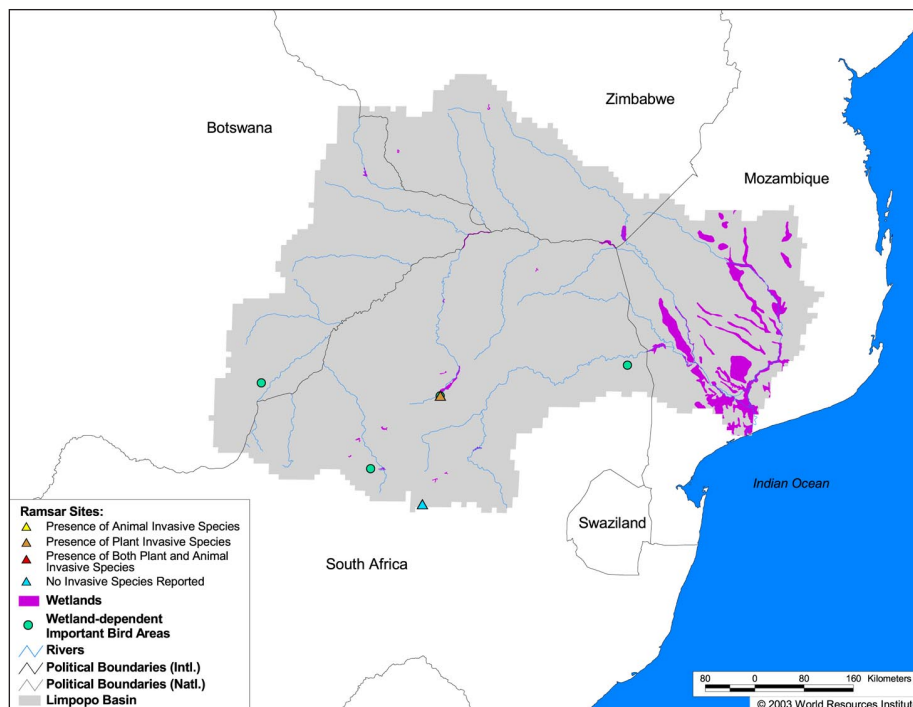
## Basin Indicators

Basin Area (sq. km.):	421,123
Average Population Density (people per sq. km.):	32
Number of Large Cities (>100,000 people):	4
Water Supply per Person (1995)(m <sup>3</sup> /year):	716
Degree of river fragmentation:	High
Number of Dams (>15m high) in Basin:	25
Number of Dams (>150m high) in Basin:	0
Number of Dams (>60m high) under Construction:	0
Number of Dams (>15m high) on Main Stem of River:	0
Number of Dams (>150m high) on Main Stem of River:	0



## Biodiversity Information and Indicators

Number of Fish Species:	57
Number of Fish Endemics:	2
Number of Amphibian Species:	46
Number of Ramsar Sites:	2
Number of Wetland-Dependent IBAs:	4
Number of Endemic Bird Areas:	3
Percent Protected Area:	8.1



SADC - Limpopo River Commission: <http://www.sadcwscu.org.ls/>