

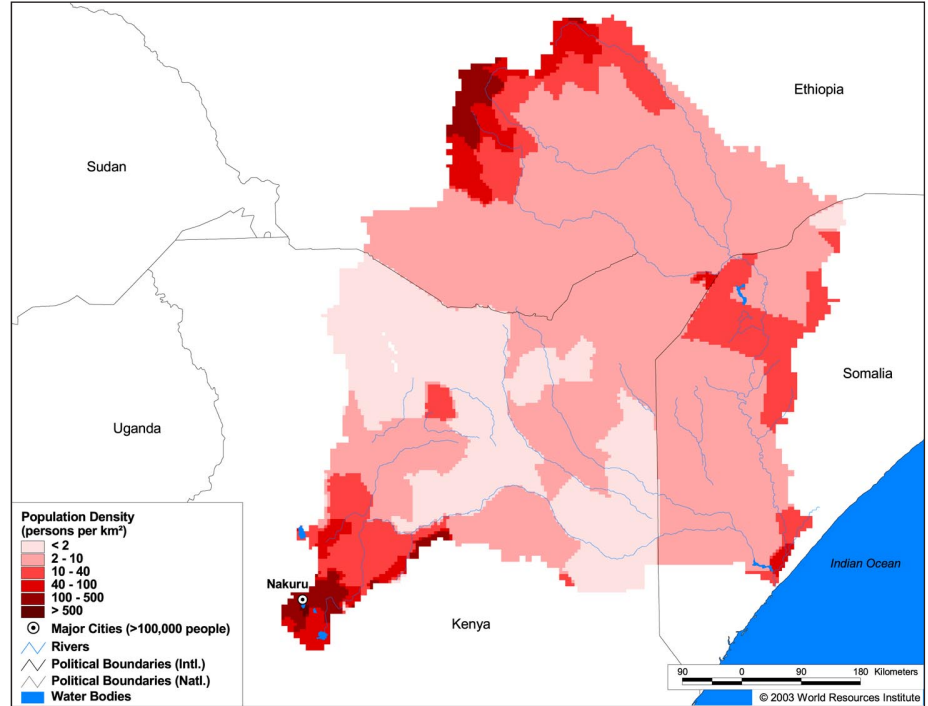
### Land Cover and Use Variables

Percent Forest Cover:	2.7
Percent Grassland, Savanna and Shrubland:	87.9
Percent Wetlands:	3.5
Percent Cropland:	6.6
Percent Irrigated Cropland:	0.1
Percent Dryland Area:	86.2
Percent Urban and Industrial Area:	0.2
Percent Loss of Original Forest Cover:	69.7



**Basin Indicators**

Basin Area (sq. km.):	497,626
Average Population Density (people per sq. km.):	12
Number of Large Cities (>100,000 people):	1
Water Supply per Person (1995)(m <sup>3</sup> /year):	1,076
Degree of river fragmentation:	-
Number of Dams (>15m high) in Basin:	-
Number of Dams (>150m high) in Basin:	-
Number of Dams (>60m high) under Construction:	0
Number of Dams (>15m high) on Main Stem of River:	-
Number of Dams (>150m high) on Main Stem of River:	-



**Biodiversity Information and Indicators**

Number of Fish Species:	34
Number of Fish Endemics:	3
Number of Amphibian Species:	60
Number of Ramsar Sites:	1
Number of Wetland-Dependent IBAs:	6
Number of Endemic Bird Areas:	5
Percent Protected Area:	1.7

