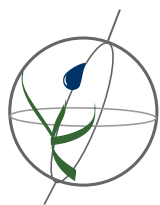


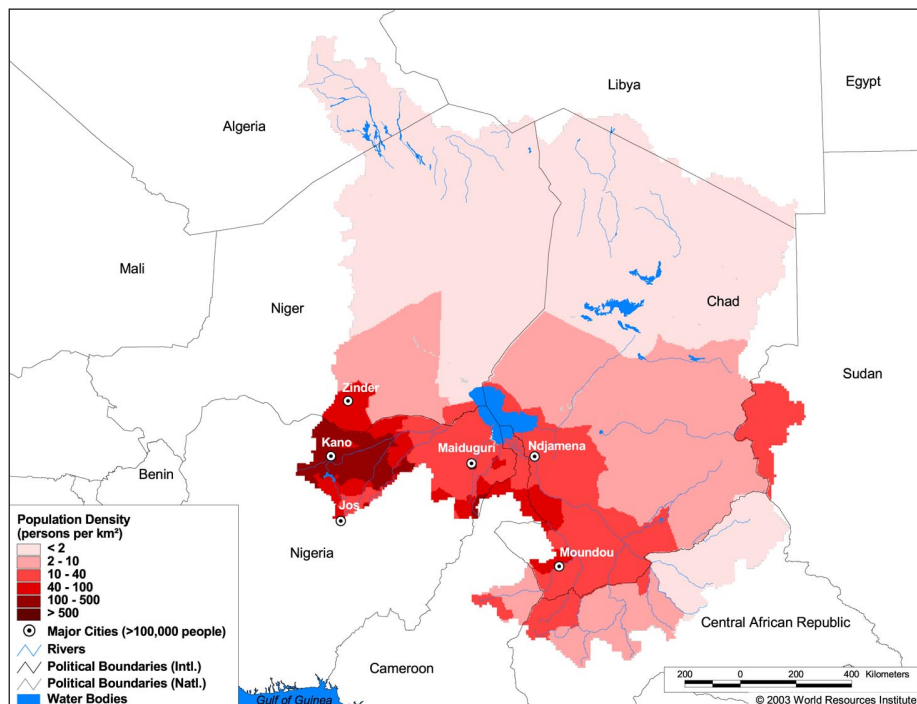
### Land Cover and Use Variables

Percent Forest Cover:	0.2
Percent Grassland, Savanna and Shrubland:	45.2
Percent Wetlands:	8.2
Percent Cropland:	3.1
Percent Irrigated Cropland:	0.0
Percent Dryland Area:	59.2
Percent Urban and Industrial Area:	0.2
Percent Loss of Original Forest Cover:	99.9



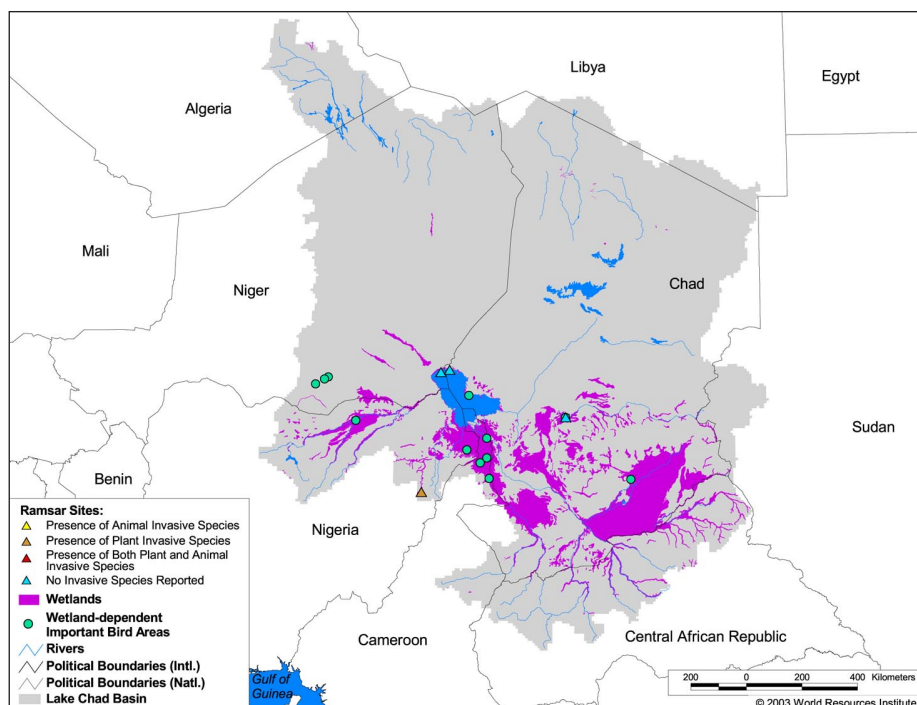
### Basin Indicators

Basin Area (sq. km.):	2,497,738
Average Population Density (people per sq. km.):	11
Number of Large Cities (>100,000 people):	6
Water Supply per Person (1995)(m <sup>3</sup> /year):	7,922
Degree of river fragmentation:	Low
Number of Dams (>15m high) in Basin:	-
Number of Dams (>150m high) in Basin:	-
Number of Dams (>60m high) under Construction:	0
Number of Dams (>15m high) on Main Stem of River:	-
Number of Dams (>150m high) on Main Stem of River:	-



### Biodiversity Information and Indicators

Number of Fish Species (Lake Chad only):	93
Number of Fish Endemics (Lake Chad only):	9
Number of Amphibian Species:	57
Number of Ramsar Sites:	4
Number of Wetland-Dependent IBAs:	12
Number of Endemic Bird Areas:	0
Percent Protected Area:	10.2



Lake Chad Basin Commission (LCBC): <http://www.imf.org/external/np/sec/decdo/lcbc.htm>