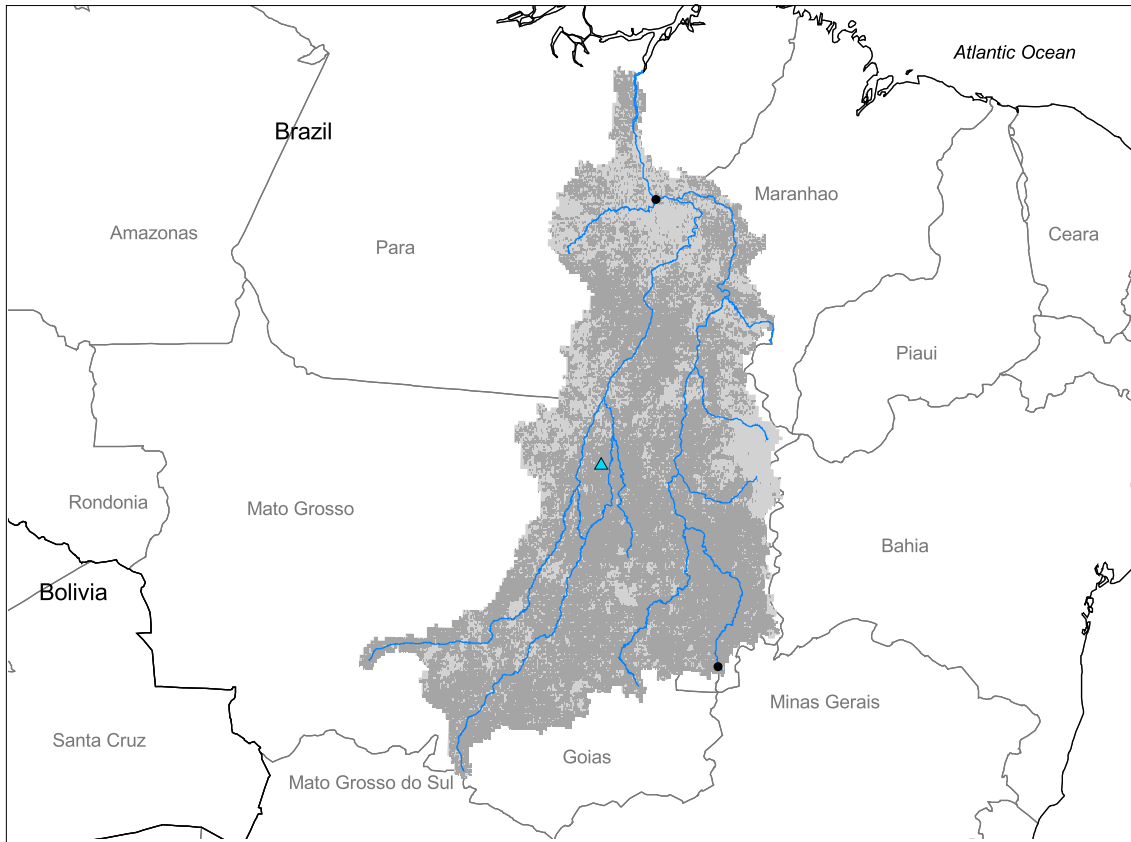


Tocantins Watershed



- Watershed
- Cities (population > 100,000)
- ▲ Ramsar Sites
- Political Boundaries (Intl.)
- Political Boundaries (Natl.)
- Rivers
- Modified Landscape



Basin area:	764,183 km ²	Forest:	9%
Population density:	6 people per km ²	Cropland:	63%
Urban growth rate:	-	Cropland irrigated:	0%
Large cities:	2	Developed:	1%
Total fish species:	-	Shrub:	1%
Fish endemics:	-	Grassland:	26%
Threatened fish species:	0	Barren:	0%
Endemic bird areas:	1	Loss of original forest:	50%
Ramsar sites:	1	Deforestation rate:	10%
Protected areas:	1%	Eroded area:	2%
Wetlands:	19%	Large dams:	1
Arid:	0%	Planned major dams:	1

