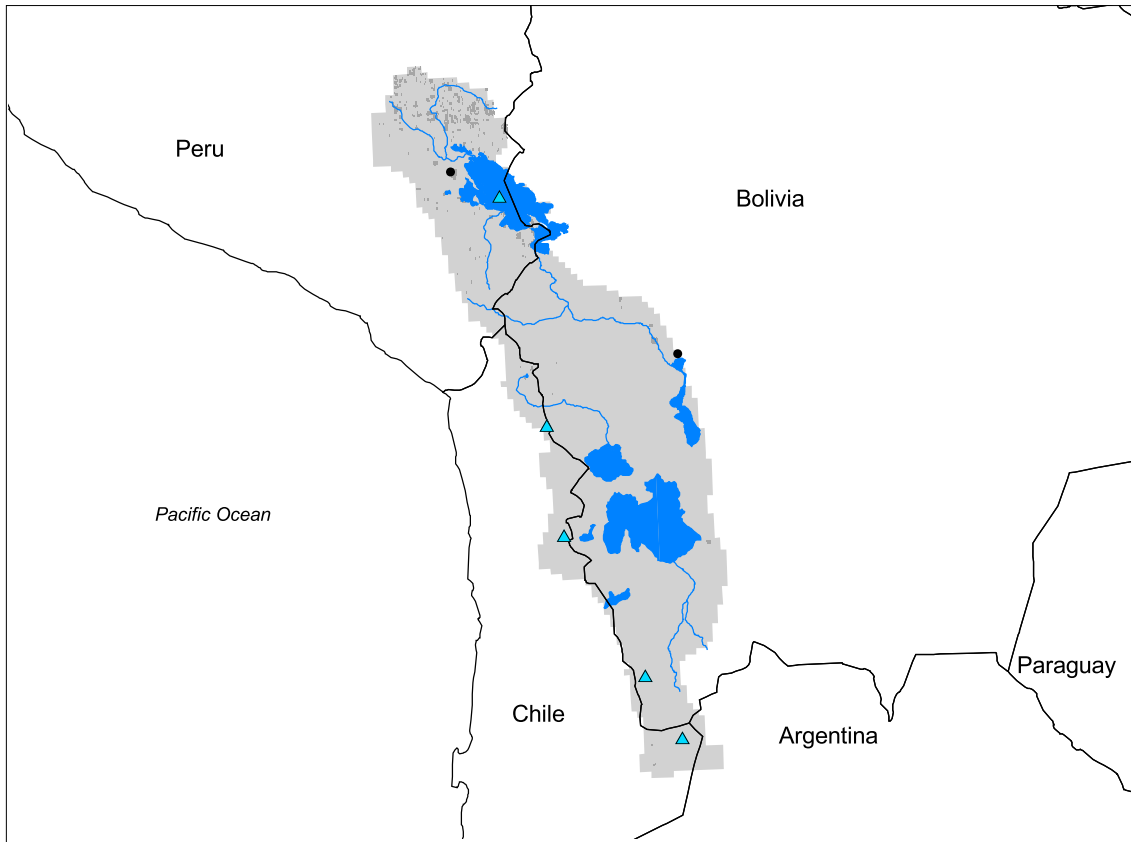
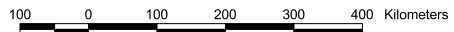


# Lakes Titicaca & Salar de Uyuni Watershed



- Watershed
- Cities (population > 100,000)
- Ramsar Sites
- Political Boundaries (Intl.)
- Political Boundaries (Natl.)
- Rivers
- Modified Landscape



Basin area:	193,102 km <sup>2</sup>	Forest:	0%
Population density:	11 people per km <sup>2</sup>	Cropland:	1%
Urban growth rate:	-	Cropland irrigated:	0%
Large cities:	2	Developed:	1%
Total fish species:	20	Shrub:	54%
Fish endemics:	14	Grassland:	39%
Threatened fish species:	-	Barren:	4%
Endemic bird areas:	2	Loss of original forest:	100%
Ramsar sites:	5	Deforestation rate:	-
Protected areas:	10%	Eroded area:	3%
Wetlands:	0%	Large dams:	0
Arid:	65%	Planned major dams:	-

