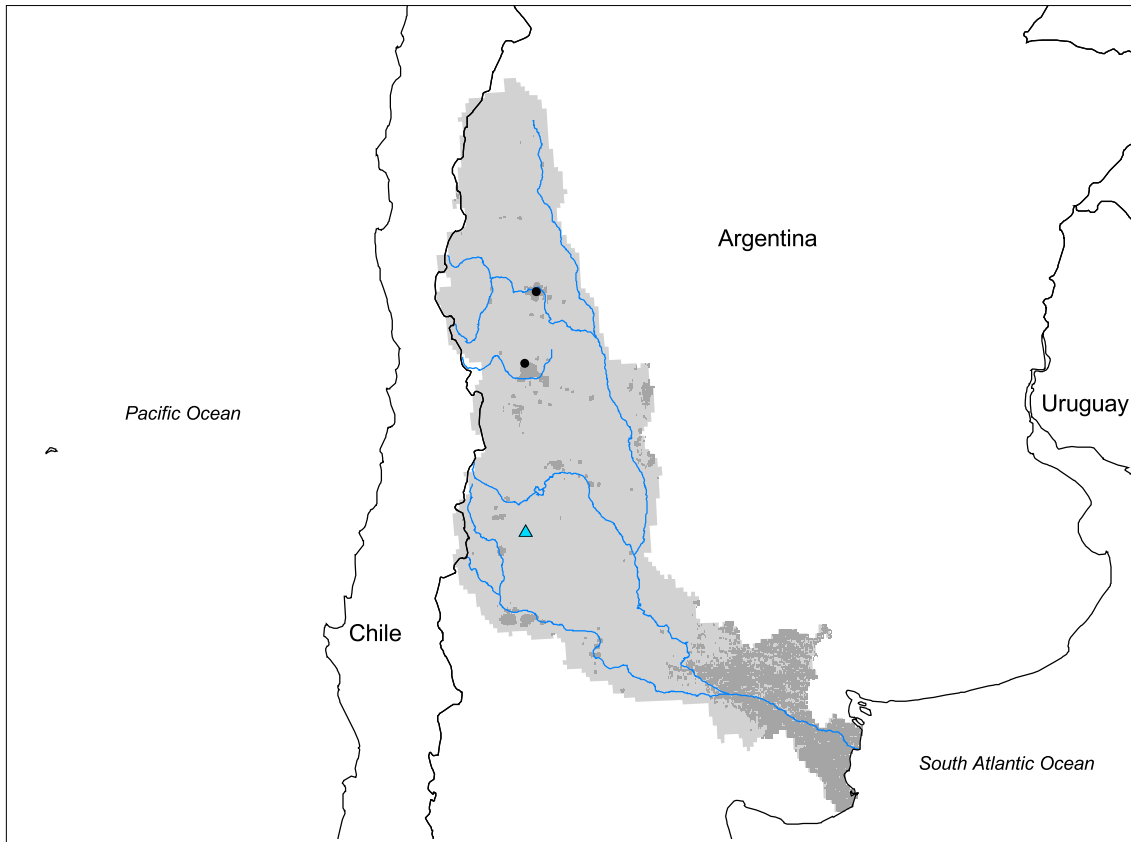


Rio Colorado Watershed



- Watershed
- Cities (population > 100,000)
- ▲ Ramsar Sites
- Political Boundaries (Intl.)
- Political Boundaries (Natl.)
- Rivers
- Modified Landscape

200 0 200 400 600 Kilometers

| | | | |
|--------------------------|-------------------------------|--------------------------|------|
| Basin area: | 402,956 km ² | Forest: | 1% |
| Population density: | 10 people per km ² | Cropland: | 10% |
| Urban growth rate: | 2.1% | Cropland irrigated: | 0% |
| Large cities: | 2 | Developed: | 2% |
| Total fish species: | - | Shrub: | 27% |
| Fish endemics: | - | Grassland: | 44% |
| Threatened fish species: | 0 | Barren: | 16% |
| Endemic bird areas: | 3 | Loss of original forest: | 100% |
| Ramsar sites: | 1 | Deforestation rate: | - |
| Protected areas: | 5% | Eroded area: | 0% |
| Wetlands: | 2% | Large dams: | 1 |
| Arid: | 71% | Planned major dams: | 1 |

