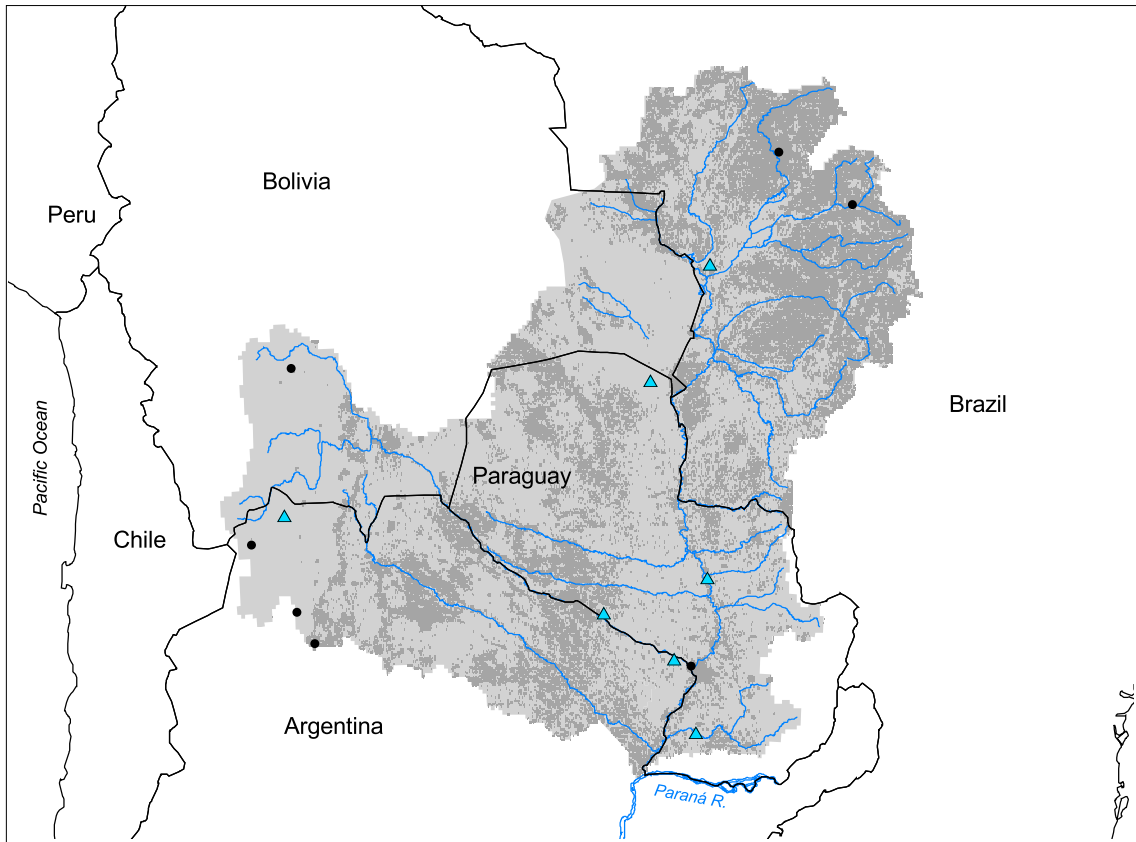


Paraná Watershed: Paraguay Subbasin



- Watershed
- Cities (population > 100,000)
- ▲ Ramsar Sites
- Political Boundaries (Intl.)
- Political Boundaries (Natl.)
- Rivers
- Modified Landscape

100 0 100 200 300 400 500 Kilometers

Basin area:	1,168,540 km ²
Population density:	7 people per km ²
Urban growth rate:	2.2%
Large cities:	7
Total fish species:	254
Fish endemics:	85
Threatened fish species:	0
Endemic bird areas:	4
Ramsar sites:	7
Protected areas:	5%
Wetlands:	19%
Arid:	22%

Forest:	18%
Cropland:	28%
Cropland irrigated:	0%
Developed:	1%
Shrub:	5%
Grassland:	47%
Barren:	0%
Loss of original forest:	35%
Deforestation rate:	16%
Eroded area:	3%
Large dams:	0
Planned major dams:	-

