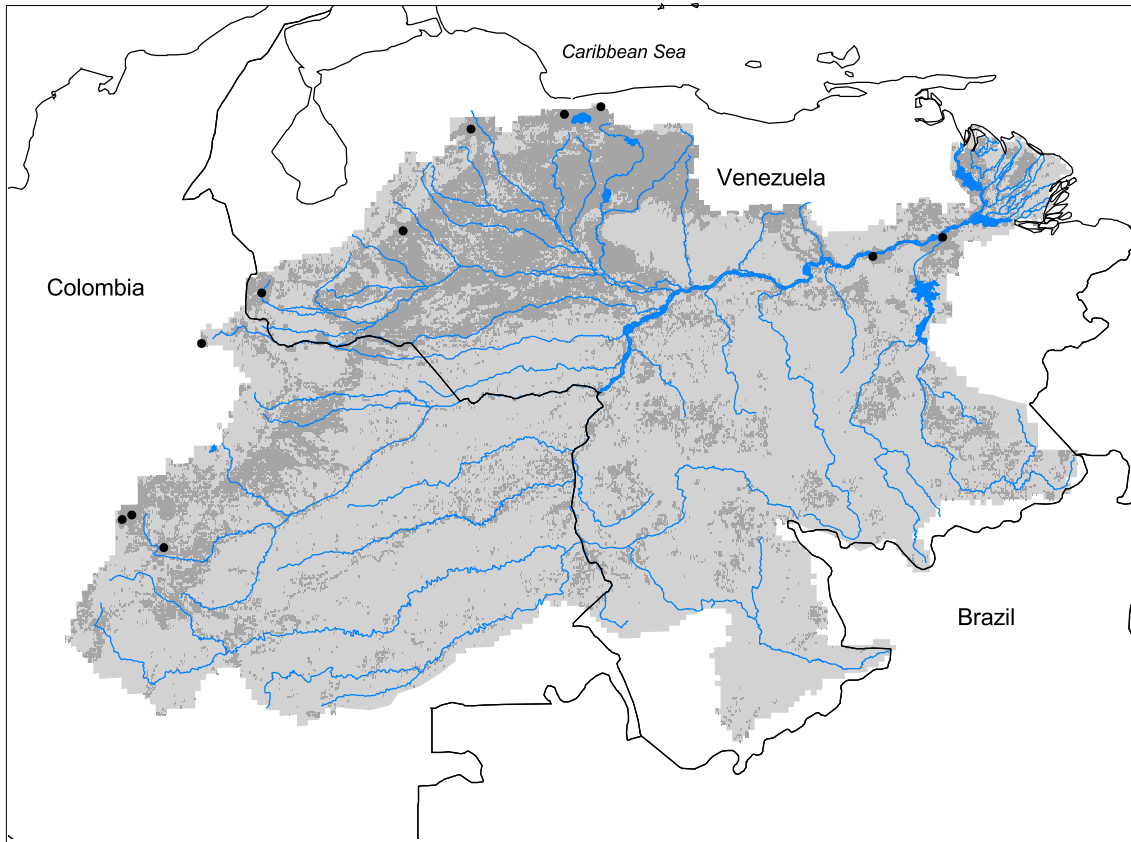


# Orinoco Watershed



- Watershed
- Cities (population > 100,000)
- Ramsar Sites
- Political Boundaries (Intl.)
- Political Boundaries (Natl.)
- Rivers
- Modified Landscape

100 0 100 200 300 400 Kilometers

|                          |                               |                          |     |
|--------------------------|-------------------------------|--------------------------|-----|
| Basin area:              | 953,598 km <sup>2</sup>       | Forest:                  | 50% |
| Population density:      | 13 people per km <sup>2</sup> | Cropland:                | 19% |
| Urban growth rate:       | 2.9%                          | Cropland irrigated:      | 0%  |
| Large cities:            | 12                            | Developed:               | 3%  |
| Total fish species:      | 318                           | Shrub:                   | 1%  |
| Fish endemics:           | 88                            | Grassland:               | 26% |
| Threatened fish species: | 0                             | Barren:                  | 0%  |
| Endemic bird areas:      | 9                             | Loss of original forest: | 23% |
| Ramsar sites:            | 0                             | Deforestation rate:      | 12% |
| Protected areas:         | 24%                           | Eroded area:             | 2%  |
| Wetlands:                | 15%                           | Large dams:              | 10  |
| Arid:                    | 9%                            | Planned major dams:      | 2   |

