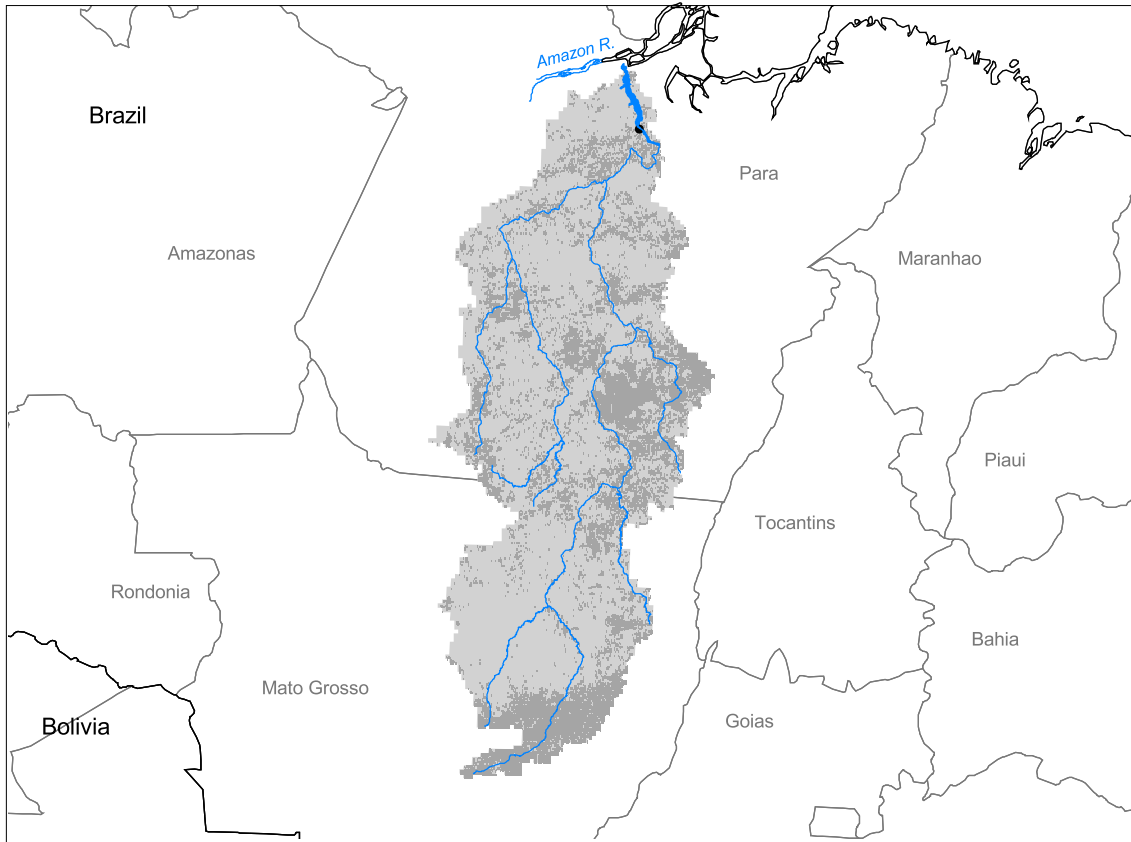


Amazon Watershed: Xingu Subbasin



- Watershed
- Cities (population > 100,000)
- ▲ Ramsar Sites
- Political Boundaries (Intl.)
- Political Boundaries (Natl.)
- Rivers
- Modified Landscape

200 0 200 400 600 Kilometers

Basin area:	520,292 km ²	Forest:	70%
Population density:	3 people per km ²	Cropland:	25%
Urban growth rate:	-	Cropland irrigated:	0%
Large cities:	1	Developed:	< 1%
Total fish species:	83	Shrub:	0%
Fish endemics:	-	Grassland:	4%
Threatened fish species:	0	Barren:	0%
Endemic bird areas:	1	Loss of original forest:	17%
Ramsar sites:	0	Deforestation rate:	7%
Protected areas:	0%	Eroded area:	0%
Wetlands:	4%	Large dams:	0
Arid:	0%	Planned major dams:	-

