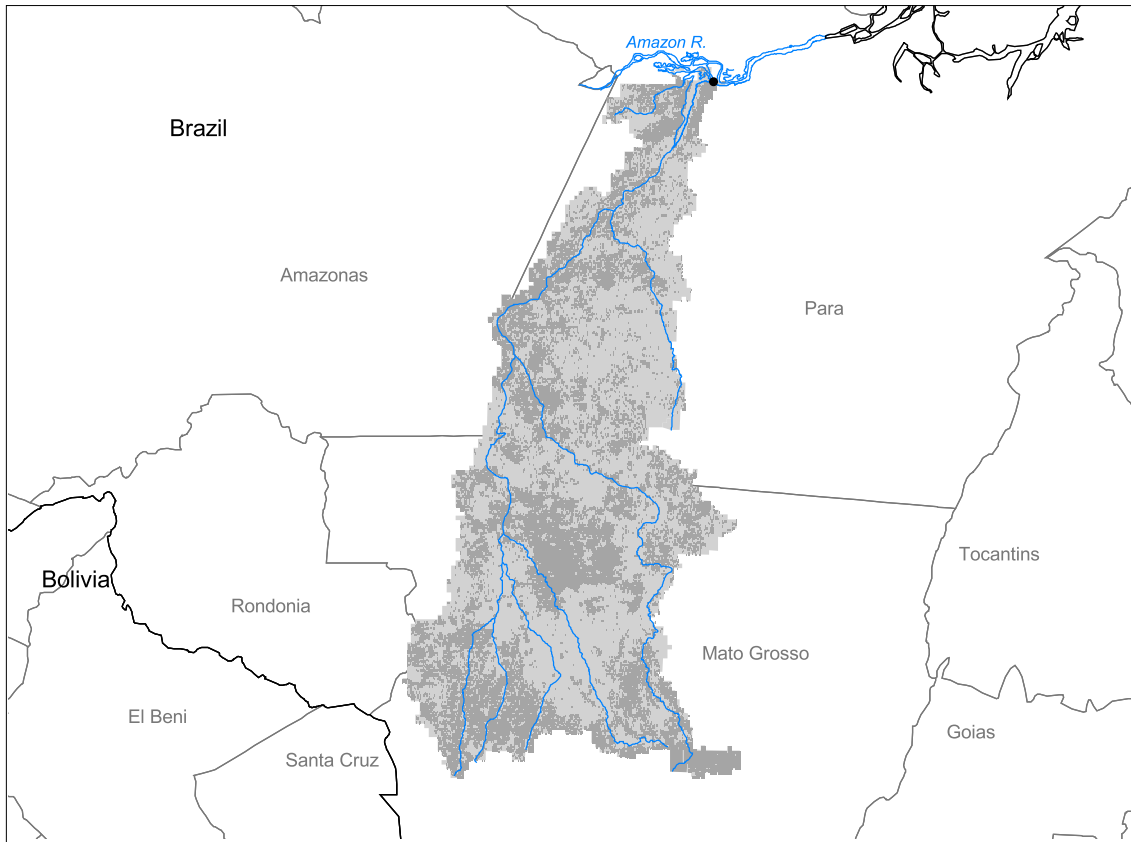


# Amazon Watershed: Tapajos Subbasin



- Watershed
- Cities (population > 100,000)
- ▲ Ramsar Sites
- Political Boundaries (Intl.)
- Political Boundaries (Natl.)
- Rivers
- Modified Landscape

100 0 100 200 300 400 Kilometers

Basin area:	486,792 km <sup>2</sup>	Forest:	57%
Population density:	2 people per km <sup>2</sup>	Cropland:	35%
Urban growth rate:	-	Cropland irrigated:	0%
Large cities:	1	Developed:	0%
Total fish species:	-	Shrub:	1%
Fish endemics:	-	Grassland:	6%
Threatened fish species:	0	Barren:	0%
Endemic bird areas:	1	Loss of original forest:	19%
Ramsar sites:	0	Deforestation rate:	7%
Protected areas:	1%	Eroded area:	0%
Wetlands:	2%	Large dams:	0
Arid:	0%	Planned major dams:	-

