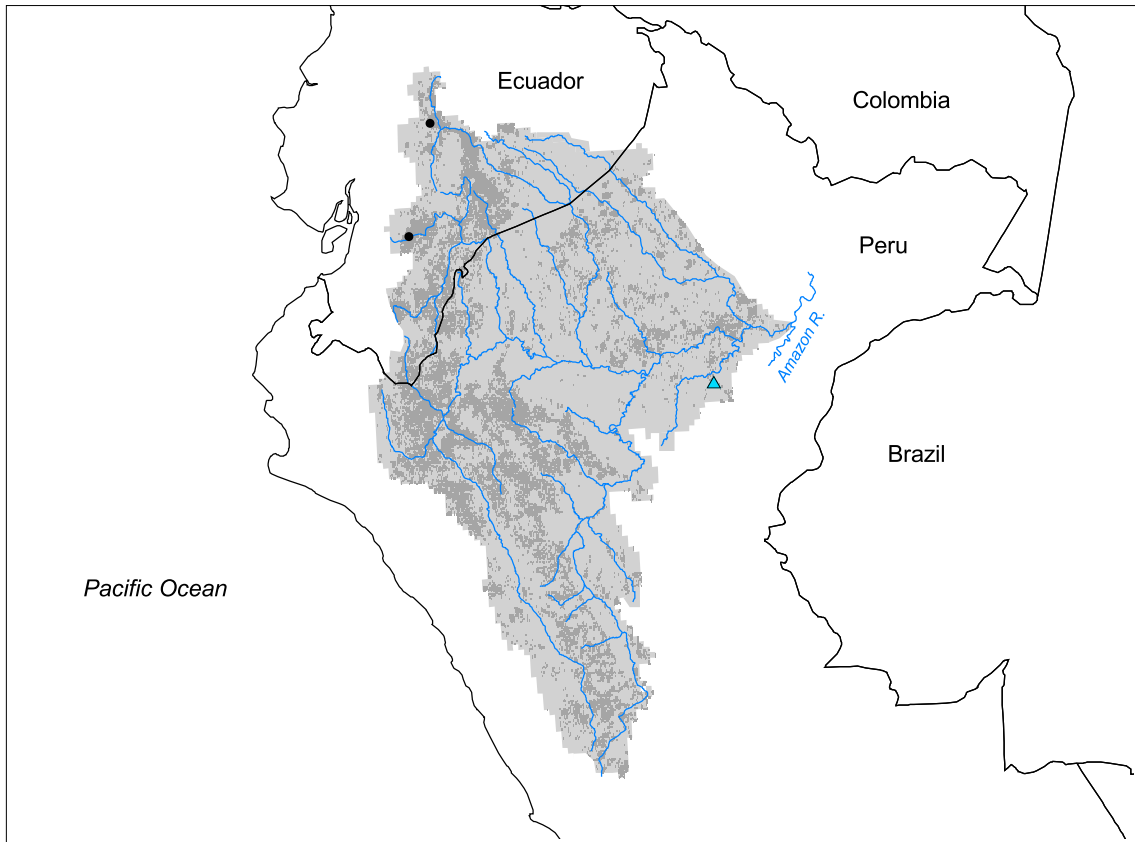


Amazon Watershed: Marañón Subbasin



- Watershed
- Cities (population > 100,000)
- Ramsar Sites
- Political Boundaries (Intl.)
- Political Boundaries (Natl.)
- Rivers
- Modified Landscape

100 0 100 200 300 400 Kilometers

Basin area:	382,877 km ²	Forest:	61%
Population density:	13 people per km ²	Cropland:	19%
Urban growth rate:	-	Cropland irrigated:	1%
Large cities:	2	Developed:	1%
Total fish species:	-	Shrub:	5%
Fish endemics:	-	Grassland:	13%
Threatened fish species:	0	Barren:	0%
Endemic bird areas:	12	Loss of original forest:	17%
Ramsar sites:	1	Deforestation rate:	7%
Protected areas:	3%	Eroded area:	7%
Wetlands:	21%	Large dams:	0
Arid:	11%	Planned major dams:	1

