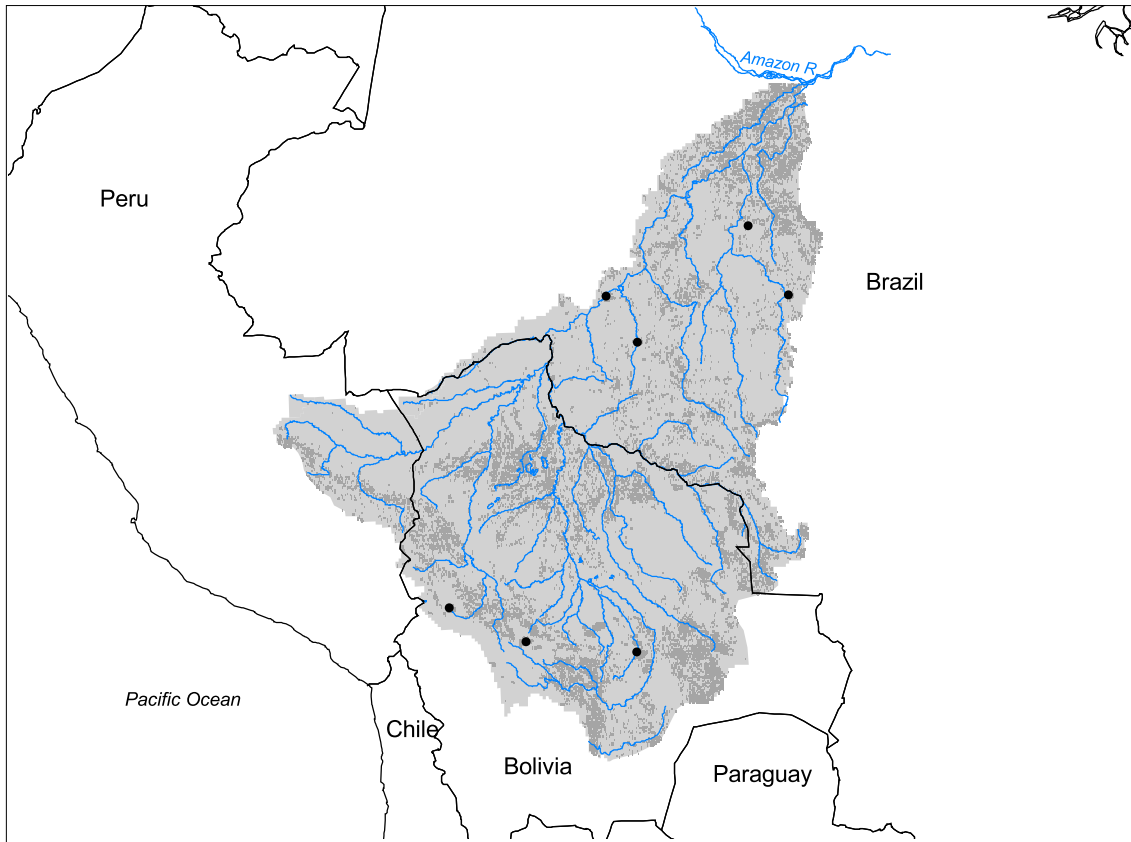


# Amazon Watershed: Madeira Subbasin



- Watershed
- Cities (population > 100,000)
- ▲ Ramsar Sites
- Political Boundaries (Intl.)
- Political Boundaries (Natl.)
- Rivers
- Modified Landscape

200 0 200 400 600 800 Kilometers

Basin area:	1,485,218 km <sup>2</sup>	Forest:	66%
Population density:	5 people per km <sup>2</sup>	Cropland:	16%
Urban growth rate:	4.2%	Cropland irrigated:	0%
Large cities:	7	Developed:	1%
Total fish species:	398	Shrub:	3%
Fish endemics:	-	Grassland:	13%
Threatened fish species:	0	Barren:	0%
Endemic bird areas:	8	Loss of original forest:	17%
Ramsar sites:	0	Deforestation rate:	9%
Protected areas:	12%	Eroded area:	3%
Wetlands:	4%	Large dams:	0
Arid:	11%	Planned major dams:	-

