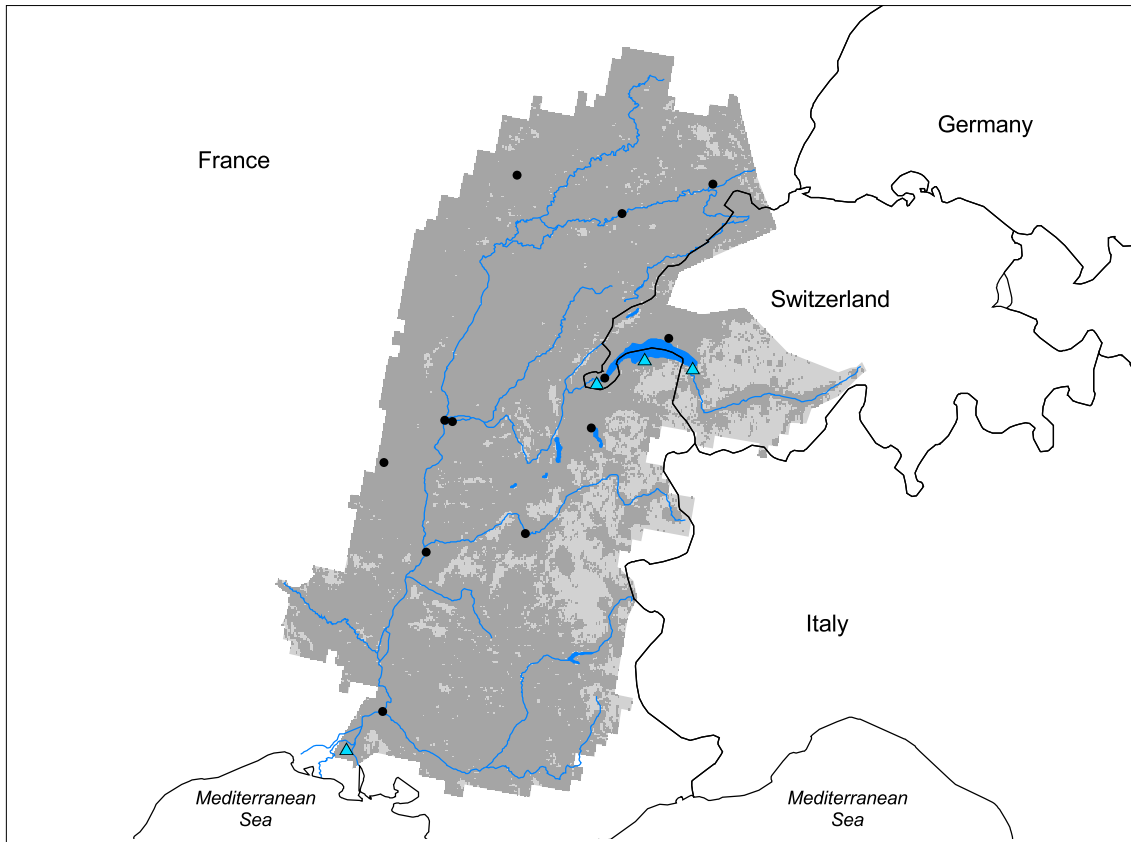
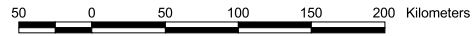


# Rhone Watershed



- Watershed
- Cities (population > 100,000)
- ▲ Ramsar Sites
- Political Boundaries (Intl.)
- Political Boundaries (Natl.)
- Rivers
- Modified Landscape



Basin area:	100,531 km <sup>2</sup>	Forest:	11%
Population density:	97 people per km <sup>2</sup>	Cropland:	61%
Urban growth rate:	0.6%	Cropland irrigated:	0%
Large cities:	12	Developed:	21%
Total fish species:	58 (diad: 5)	Shrub:	3%
Fish endemics:	1	Grassland:	2%
Threatened fish species:	2	Barren:	0%
Endemic bird areas:	0	Loss of original forest:	69%
Ramsar sites:	4	Deforestation rate:	-
Protected areas:	14%	Eroded area:	5%
Wetlands:	1%	Large dams:	10
Arid:	0%	Planned major dams:	-

