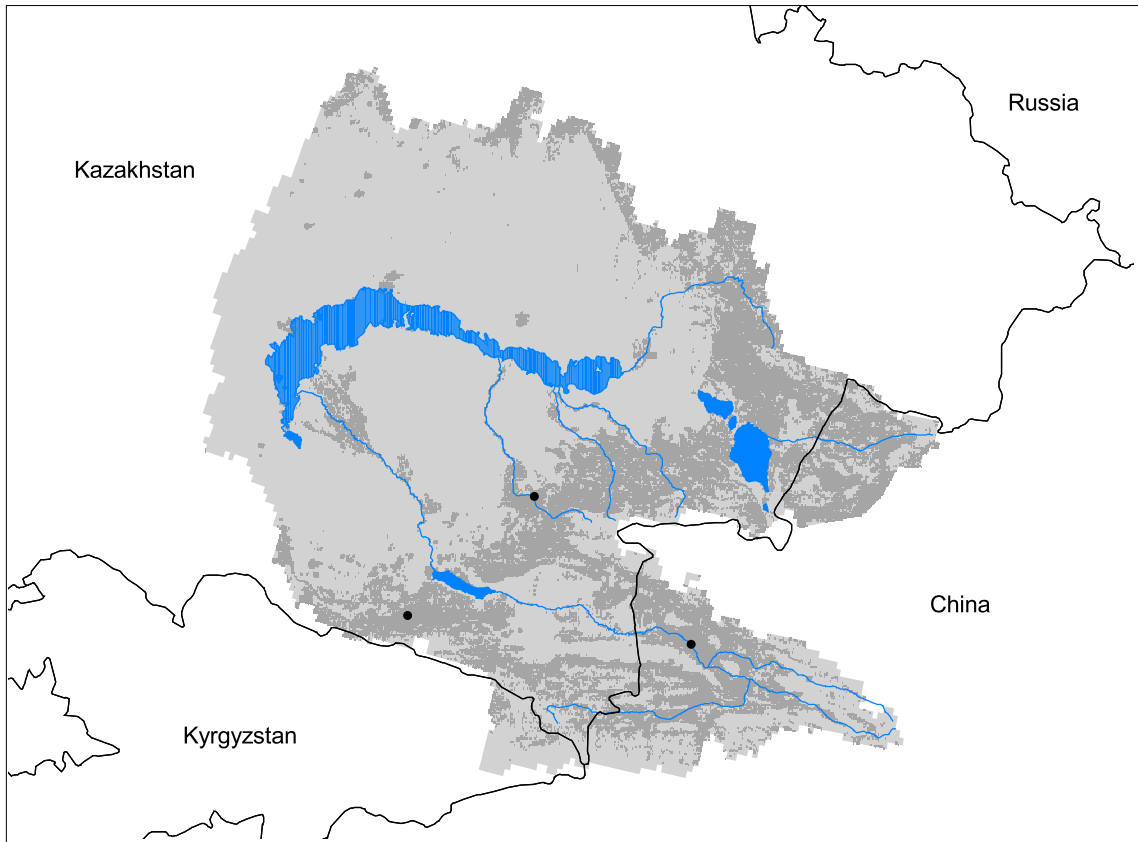


Lake Balkhash Watershed



- Watershed
- Cities (population > 100,000)
- ▲ Ramsar Sites
- Political Boundaries (Intl.)
- Political Boundaries (Natl.)
- Rivers
- Modified Landscape

100 0 100 200 300 400 Kilometers

Basin area:	512,010 km ²	Forest:	4%
Population density:	11 people per km ²	Cropland:	24%
Urban growth rate:	1.0%	Cropland irrigated:	21%
Large cities:	3	Developed:	2%
Total fish species:	36 (intr: 23)	Shrub:	20%
Fish endemics:	5	Grassland:	42%
Threatened fish species:	0	Barren:	6%
Endemic bird areas:	0	Loss of original forest:	26%
Ramsar sites:	0	Deforestation rate:	-
Protected areas:	7%	Eroded area:	1%
Wetlands:	5%	Large dams:	2
Arid:	92%	Planned major dams:	-

