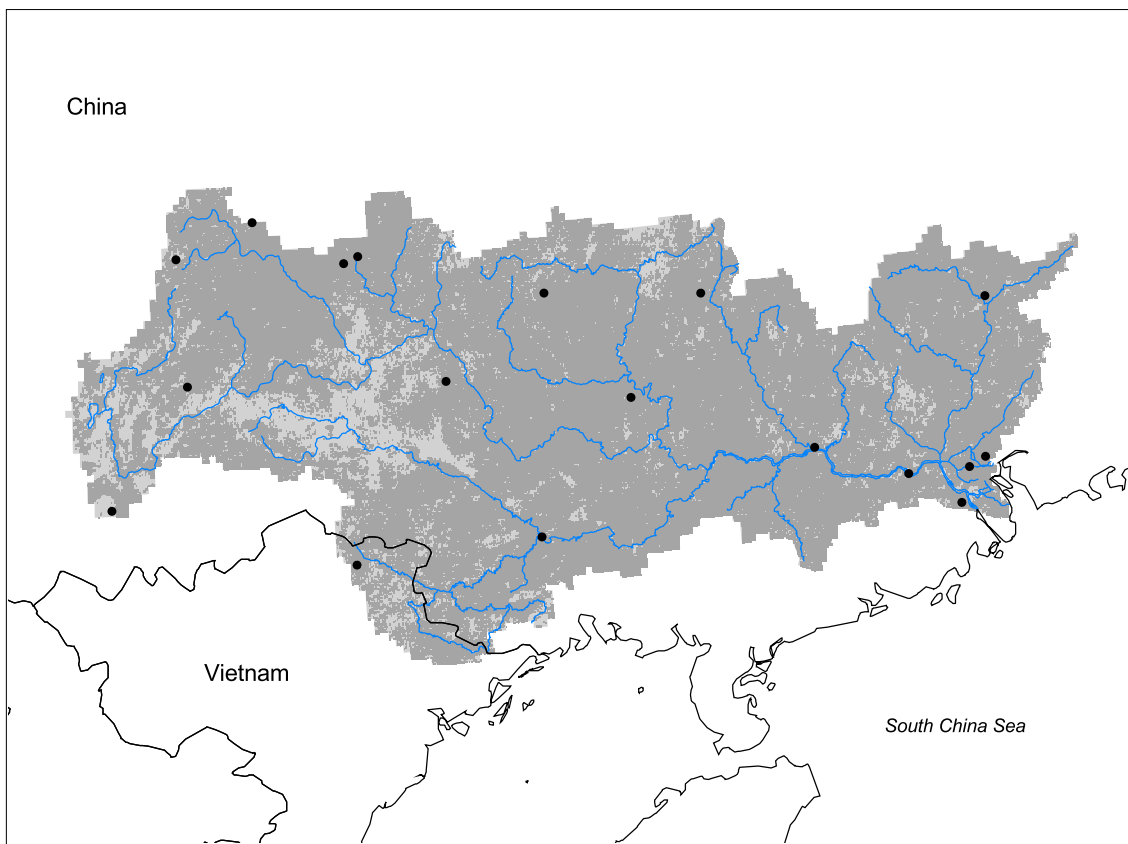


Xi Jiang (Pearl River) Watershed



- Watershed
- Cities (population > 100,000)
- ▲ Ramsar Sites
- ⚡ Political Boundaries (Intl.)
- ⚡ Political Boundaries (Natl.)
- ⚡ Rivers
- Modified Landscape

100 0 100 200 300 400 Kilometers

Basin area:	409,458 km ²	Forest:	11%
Population density:	210 people per km ²	Cropland:	76%
Urban growth rate:	3.0%	Cropland irrigated:	61%
Large cities:	18	Developed:	6%
Total fish species:	280-300	Shrub:	2%
Fish endemics:	120	Grassland:	3%
Threatened fish species:	1	Barren:	0%
Endemic bird areas:	4	Loss of original forest:	80%
Ramsar sites:	0	Deforestation rate:	-
Protected areas:	1%	Eroded area:	22%
Wetlands:	1%	Large dams:	7
Arid:	0%	Planned major dams:	2

