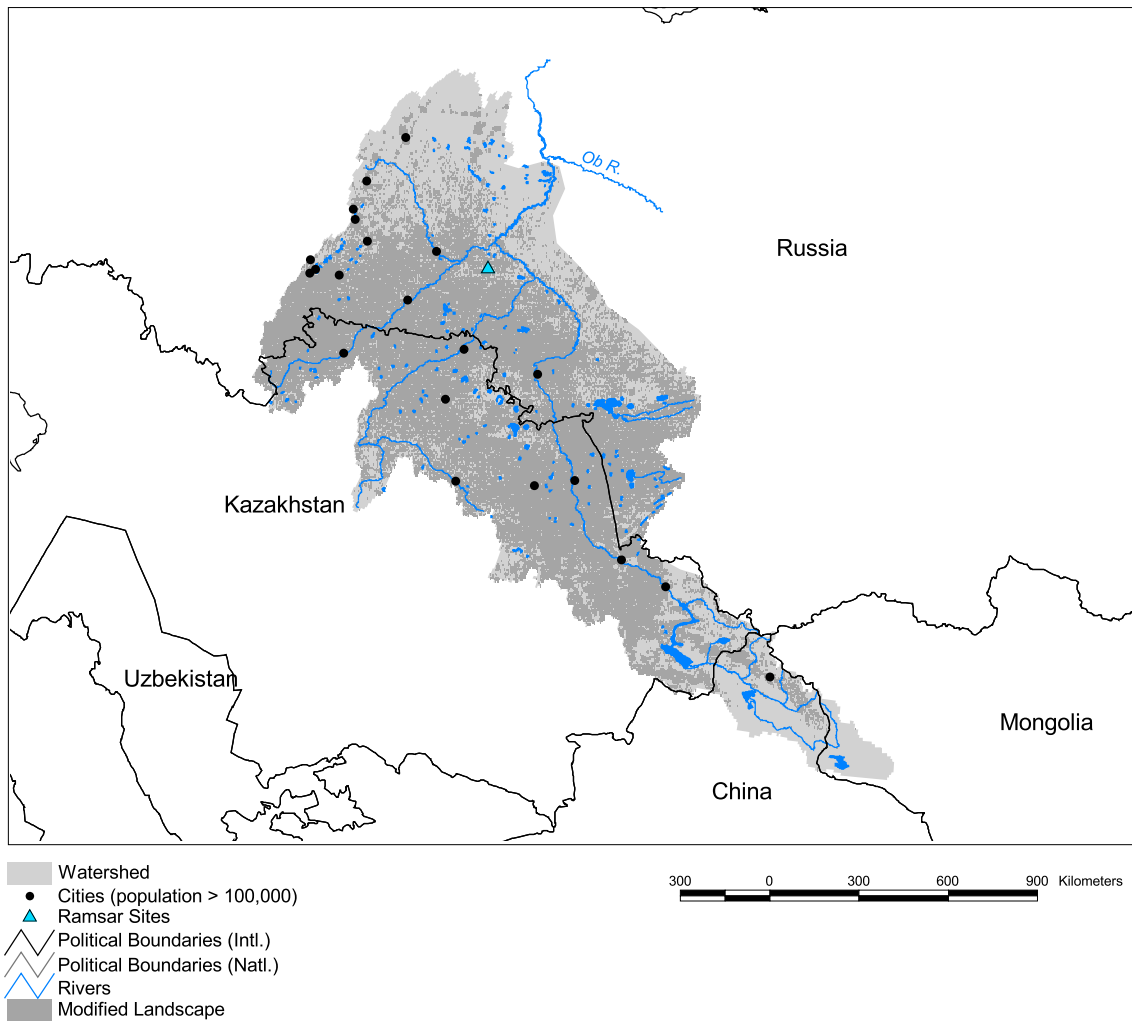


Ob Watershed: Irtysh Subbasin



Basin area:	1,673,470 km ²	Forest:	17%
Population density:	12 people per km ²	Cropland:	51%
Urban growth rate:	0.1%	Cropland irrigated:	3%
Large cities:	21	Developed:	5%
Total fish species:	-	Shrub:	4%
Fish endemics:	-	Grassland:	14%
Threatened fish species:	0	Barren:	1%
Endemic bird areas:	0	Loss of original forest:	52%
Ramsar sites:	3	Deforestation rate:	-
Protected areas:	2%	Eroded area:	3%
Wetlands:	8%	Large dams:	4
Arid:	69%	Planned major dams:	-

