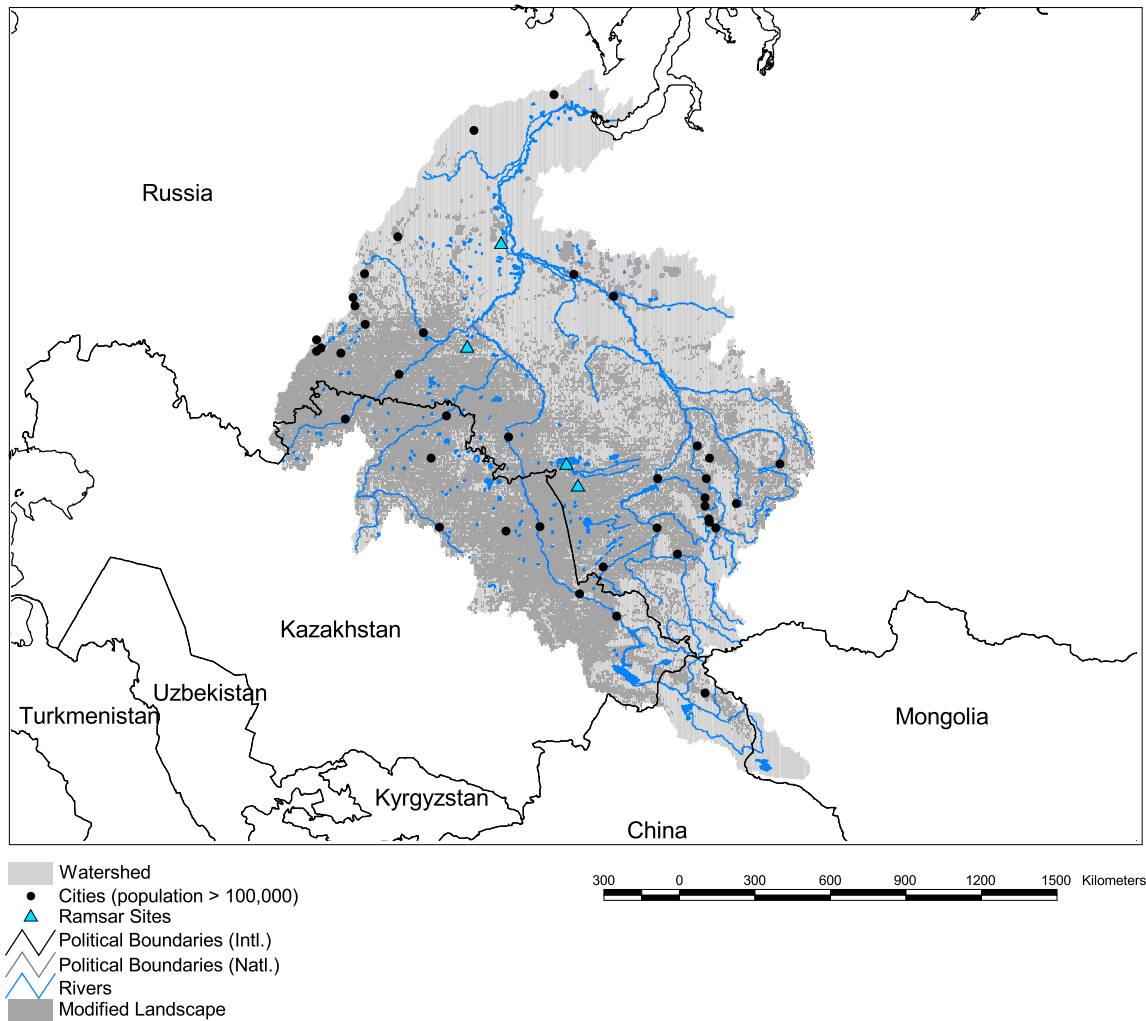


Ob Watershed



Basin area:	2,972,497 km ²	Forest:	30%
Population density:	9 people per km ²	Cropland:	36%
Urban growth rate:	0.1%	Cropland irrigated:	3%
Large cities:	39	Developed:	5%
Total fish species:	43	Shrub:	5%
Fish endemics:	0	Grassland:	10%
Threatened fish species:	0	Barren:	1%
Endemic bird areas:	-	Loss of original forest:	39%
Ramsar sites:	4	Deforestation rate:	-
Protected areas:	2%	Eroded area:	3%
Wetlands:	11%	Large dams:	5
Arid:	42%	Planned major dams:	1

