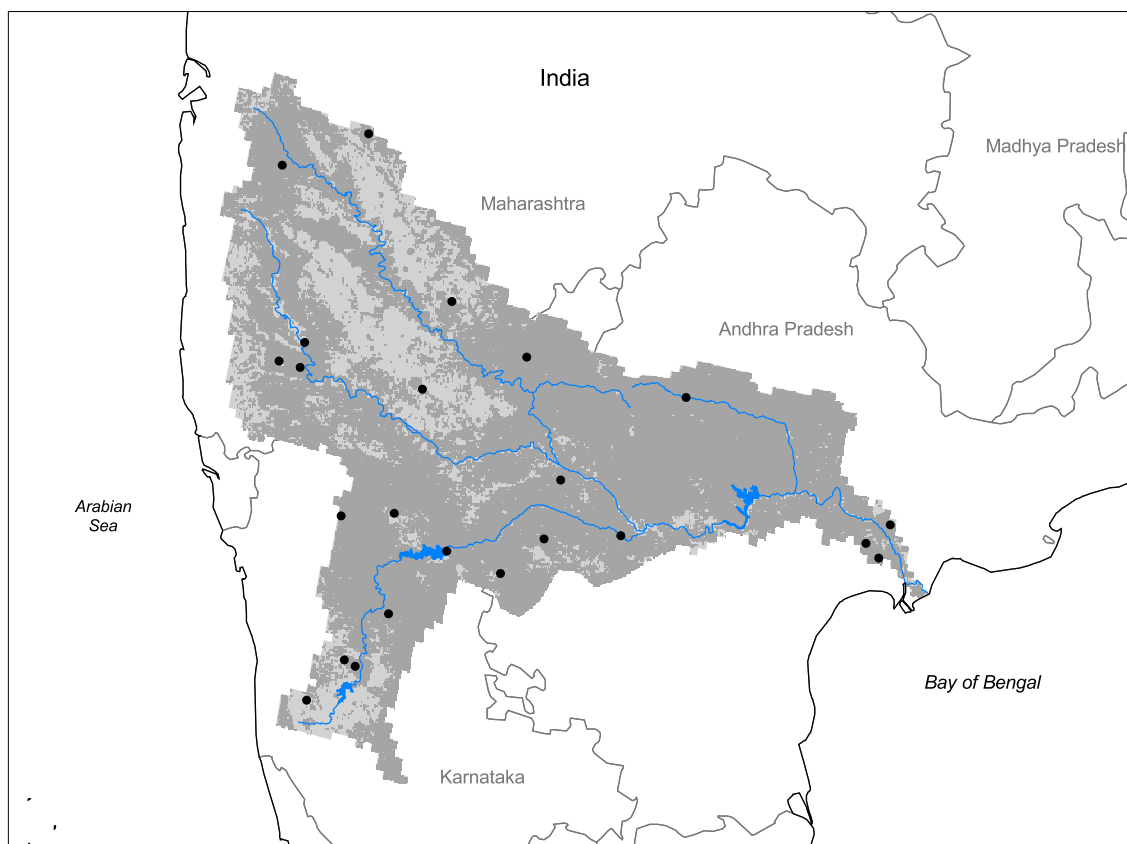


Krishna Watershed



- Watershed
- Cities (population > 100,000)
- Ramsar Sites
- Political Boundaries (Intl.)
- Political Boundaries (Natl.)
- Rivers
- Modified Landscape

100 0 100 200 300 Kilometers

Basin area: 226,026 km²
 Population density: 248 people per km²
 Urban growth rate: 3.8%
 Large cities: 23
 Total fish species: -
 Fish endemics: -
 Threatened fish species: 0
 Endemic bird areas: 1
 Ramsar sites: 0
 Protected areas: 4%
 Wetlands: 16%
 Arid: 41%

Forest: 3%
 Cropland: 67%
 Cropland irrigated: 39%
 Developed: 8%
 Shrub: 17%
 Grassland: 5%
 Barren: 0%
 Loss of original forest: 80%
 Deforestation rate: 7%
 Eroded area: 20%
 Large dams: 5
 Planned major dams: 1

Percent **Land Cover Within 5 km of Major Rivers**

