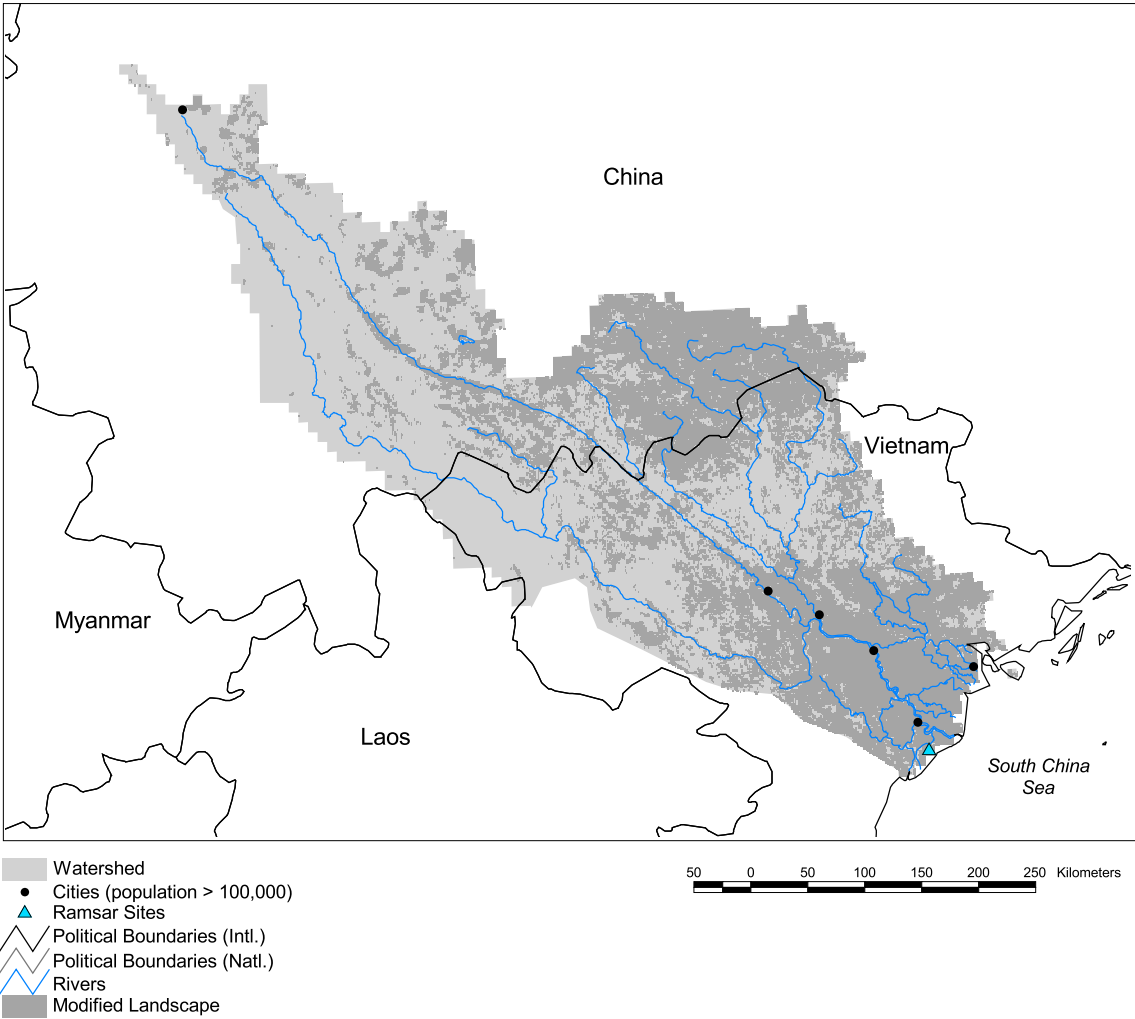


Hong (Red River) Watershed



Basin area:	170,977 km ²	Forest:	43%
Population density:	180 people per km ²	Cropland:	38%
Urban growth rate:	1.2%	Cropland irrigated:	52%
Large cities:	6	Developed:	3%
Total fish species:	180	Shrub:	11%
Fish endemics:	1	Grassland:	4%
Threatened fish species:	0	Barren:	0%
Endemic bird areas:	2	Loss of original forest:	80%
Ramsar sites:	1	Deforestation rate:	14%
Protected areas:	4%	Eroded area:	23%
Wetlands:	5%	Large dams:	3
Arid:	0%	Planned major dams:	-

