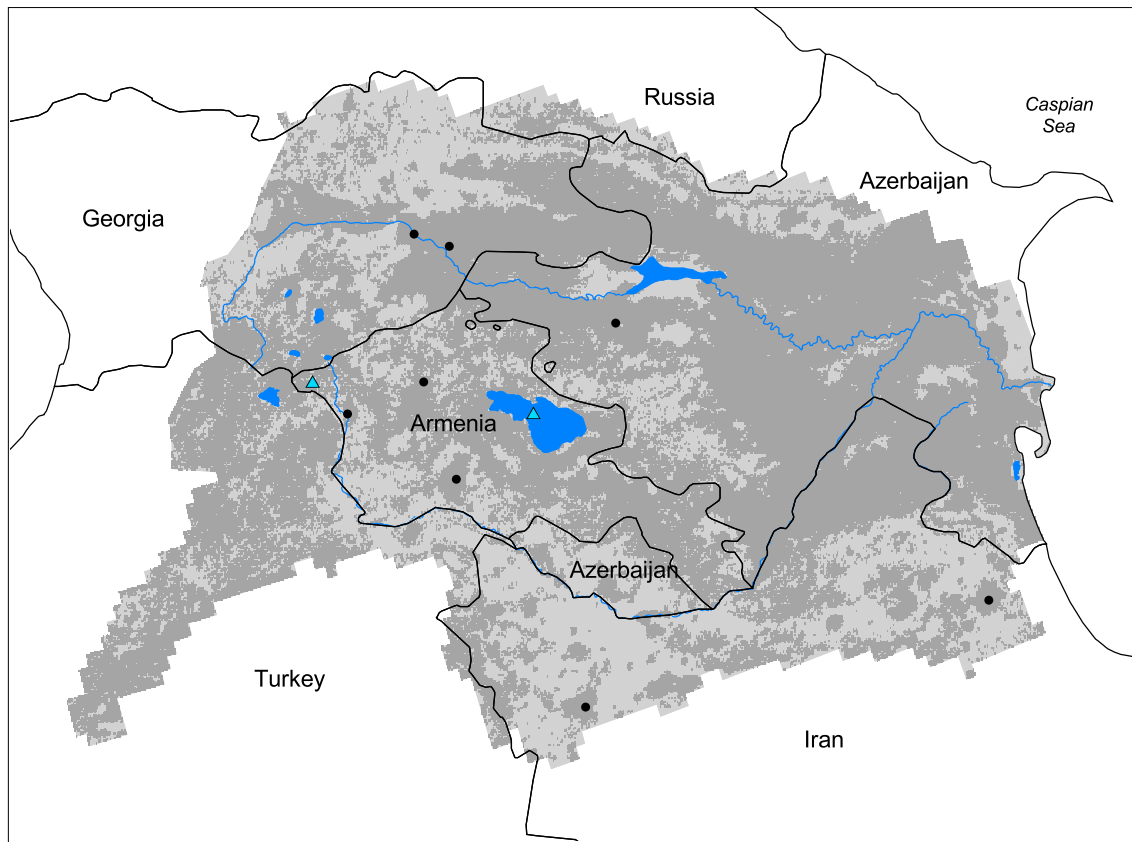


## Kura-Araks Watershed



- Watershed
- Cities (population > 100,000)
- Ramsar Sites
- Political Boundaries (Intl.)
- Political Boundaries (Natl.)
- Rivers
- Modified Landscape

50 0 50 100 150 200 Kilometers

Basin area:	205,040 km <sup>2</sup>	Forest:	13%
Population density:	72 people per km <sup>2</sup>	Cropland:	54%
Urban growth rate:	0.7%	Cropland irrigated:	6%
Large cities:	8	Developed:	7%
Total fish species:	47	Shrub:	6%
Fish endemics:	0	Grassland:	19%
Threatened fish species:	0	Barren:	0%
Endemic bird areas:	1	Loss of original forest:	80%
Ramsar sites:	2	Deforestation rate:	-
Protected areas:	4%	Eroded area:	10%
Wetlands:	1%	Large dams:	3
Arid:	25%	Planned major dams:	2

