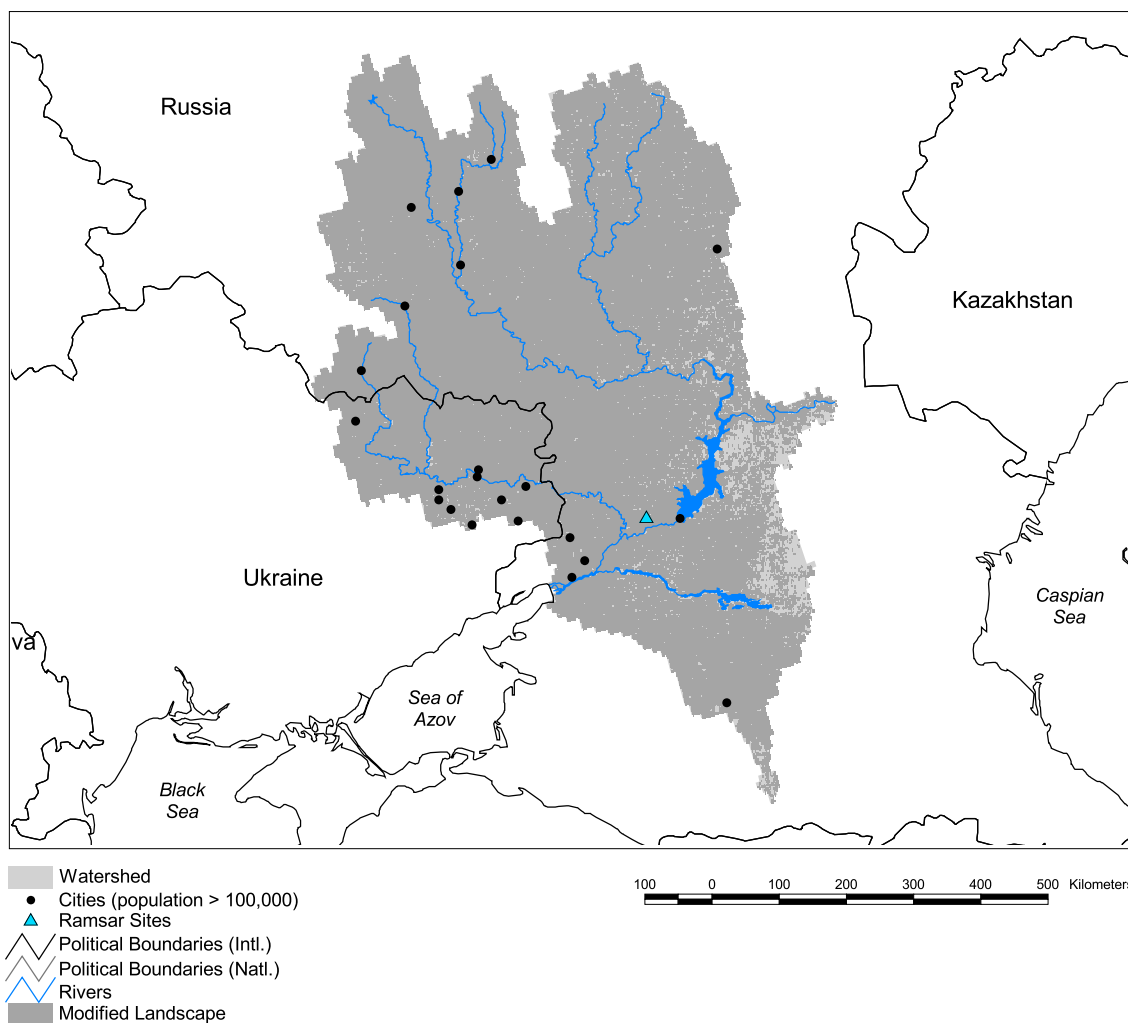


Don Watershed



Basin area: 458,703 km²
 Population density: 48 people per km²
 Urban growth rate: 0.1%
 Large cities: 22
 Total fish species: 49 (intr: 2 diad: 5)
 Fish endemics: 0
 Threatened fish species: 1
 Endemic bird areas: 1
 Ramsar sites: 1
 Protected areas: 0%
 Wetlands: 1%
 Arid: 33%

Forest: 2%
 Cropland: 83%
 Cropland irrigated: 0%
 Developed: 9%
 Shrub: 0%
 Grassland: 5%
 Barren: 0%
 Loss of original forest: 76%
 Deforestation rate: -
 Eroded area: 8%
 Large dams: 2
 Planned major dams: -

