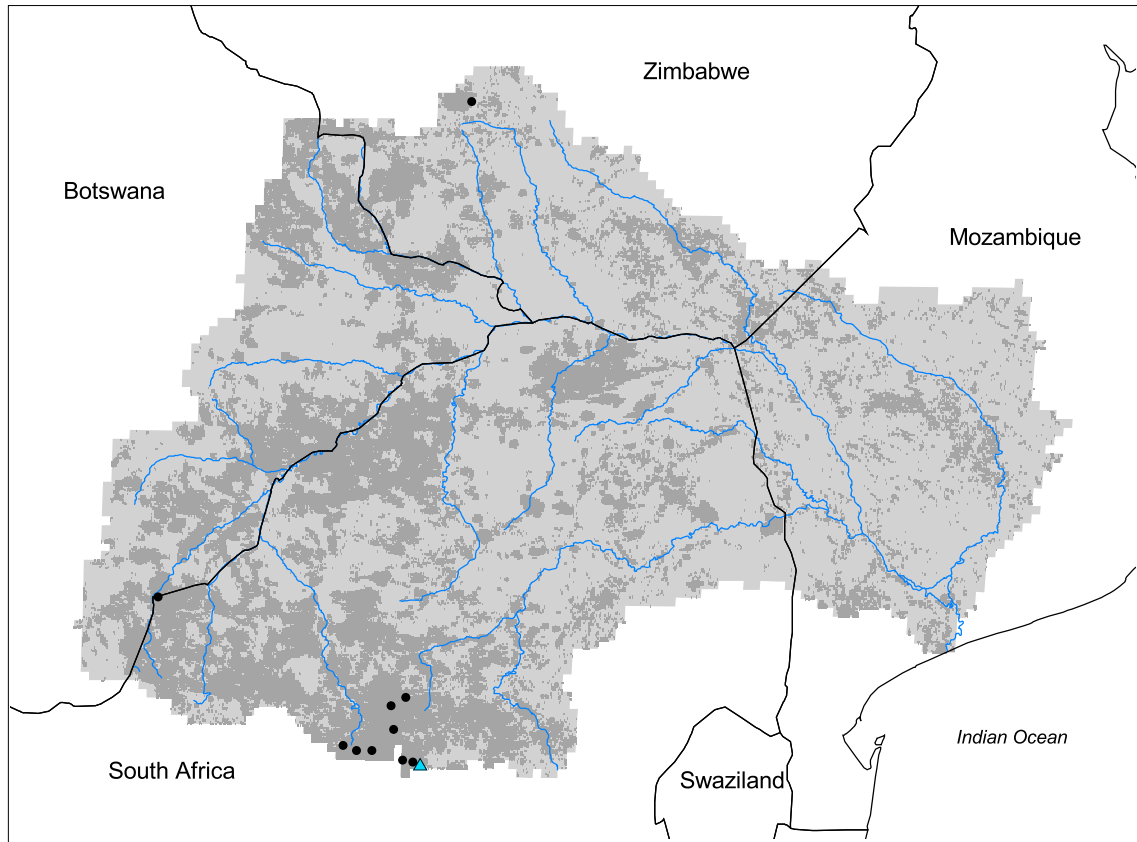


Limpopo Watershed



- Watershed
- Cities (population > 100,000)
- Ramsar Sites
- Political Boundaries (Intl.)
- Political Boundaries (Natl.)
- Rivers
- Modified Landscape

100 0 100 200 300 Kilometers

Basin area: 421,168 km²
 Population density: 35 people per km²
 Urban growth rate: 3.2%
 Large cities: 10
 Total fish species: 57 (intr: 10)
 Fish endemics: 2
 Threatened fish species: 0
 Endemic bird areas: 3
 Ramsar sites: 1
 Protected areas: 8%
 Wetlands: 3%
 Arid: 47%

Forest: 1%
 Cropland: 28%
 Cropland irrigated: 0%
 Developed: 4%
 Shrub: 1%
 Grassland: 70%
 Barren: 0%
 Loss of original forest: 99%
 Deforestation rate: 5%
 Eroded area: 10%
 Large dams: 1
 Planned major dams: -

Land Cover Within 5 km of Major Rivers

