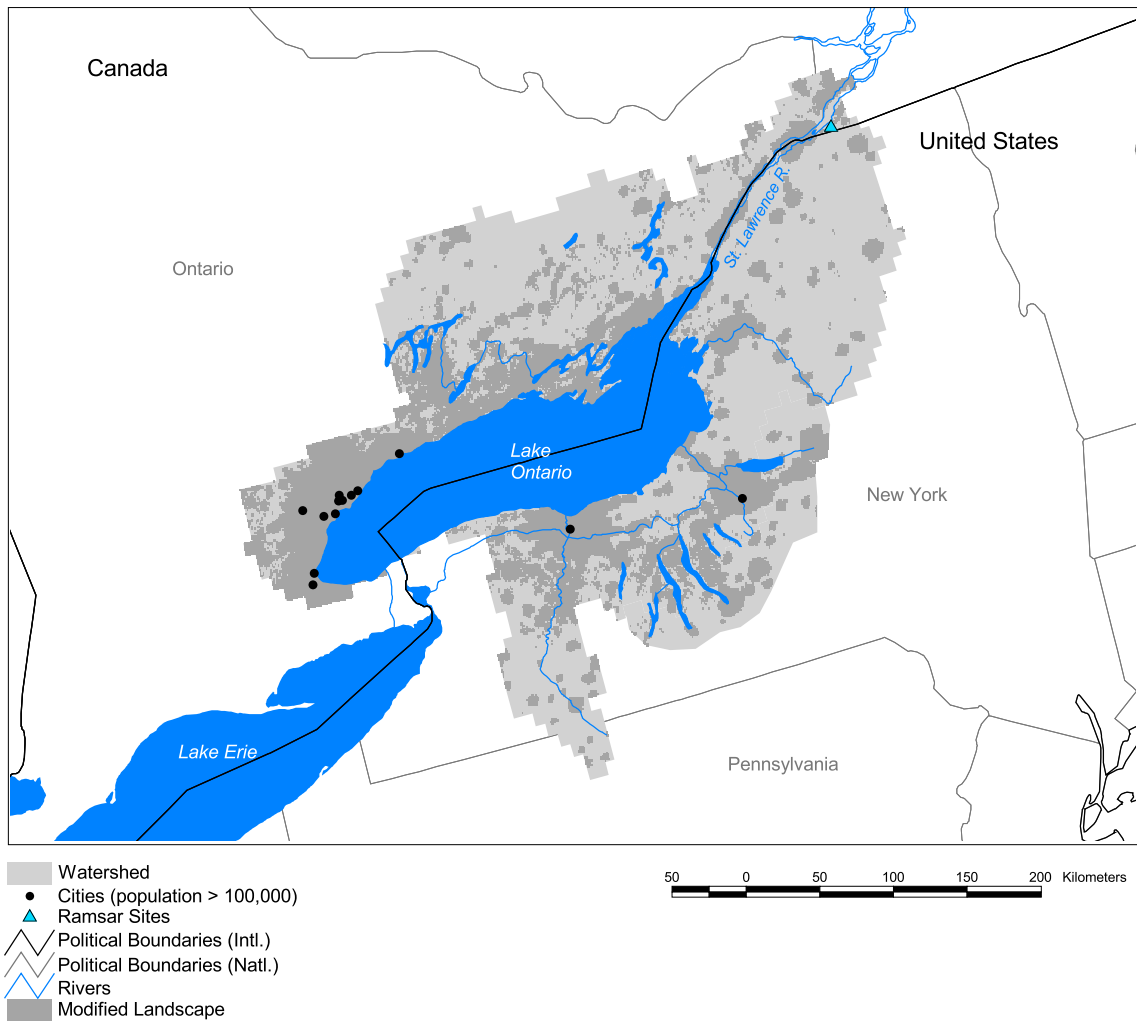


St. Lawrence Watershed: Lake Ontario Subbasin



Basin area: 96,846 km²
 Population density: 97 people per km²
 Urban growth rate: 1.5%
 Large cities: 14
 Total fish species: 99 (intr: 4 diad: 4)
 Fish endemics: 0
 Threatened fish species: 4
 Endemic bird areas: 0
 Ramsar sites: 1
 Protected areas: 17%
 Wetlands: 10%
 Arid: 0%

Forest: 61%
 Cropland: 9%
 Cropland irrigated: 0%
 Developed: 29%
 Shrub: 0%
 Grassland: 0%
 Barren: 0%
 Loss of original forest: 39%
 Deforestation rate: -
 Eroded area: 1%
 Large dams: 2
 Planned major dams: -

