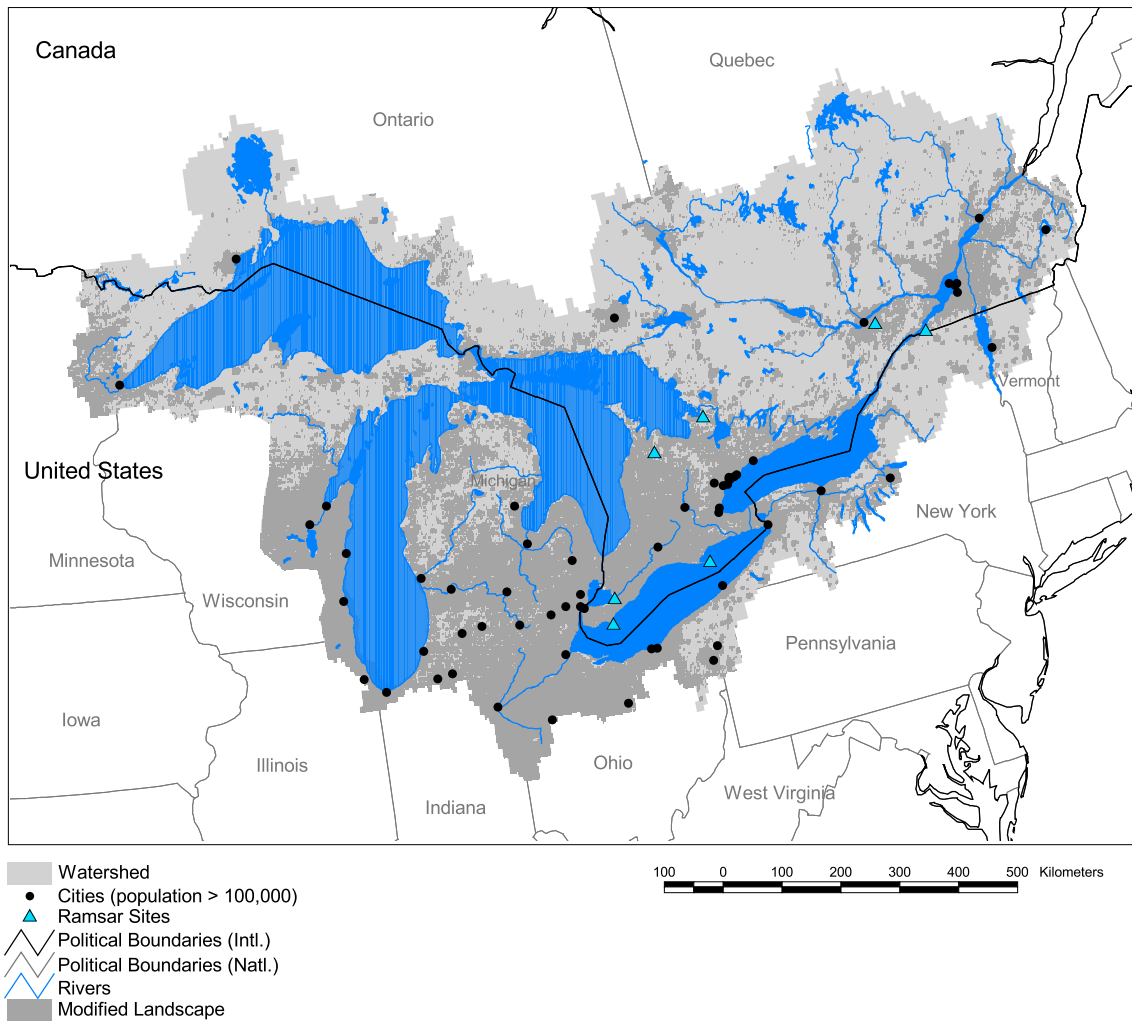


## St. Lawrence Watershed



Basin area: 1,049,621 km<sup>2</sup>  
 Population density: 54 people per km<sup>2</sup>  
 Urban growth rate: 0.8%  
 Large cities: 60  
 Total fish species: 98 (intr: 5 diad: 5) \*  
 Fish endemics: 1\*  
 Threatened fish species: 1\*  
 Endemic bird areas: 0  
 Ramsar sites: 7  
 Protected areas: 10%  
 Wetlands: 10%  
 Arid: 0%

\* St. Lawrence River only

Forest: 55%  
 Cropland: 20%  
 Cropland irrigated: 0%  
 Developed: 22%  
 Shrub: 0%  
 Grassland: 0%  
 Barren: 0%  
 Loss of original forest: 31%  
 Deforestation rate: -  
 Eroded area: 3%  
 Large dams: 11  
 Planned major dams: -

