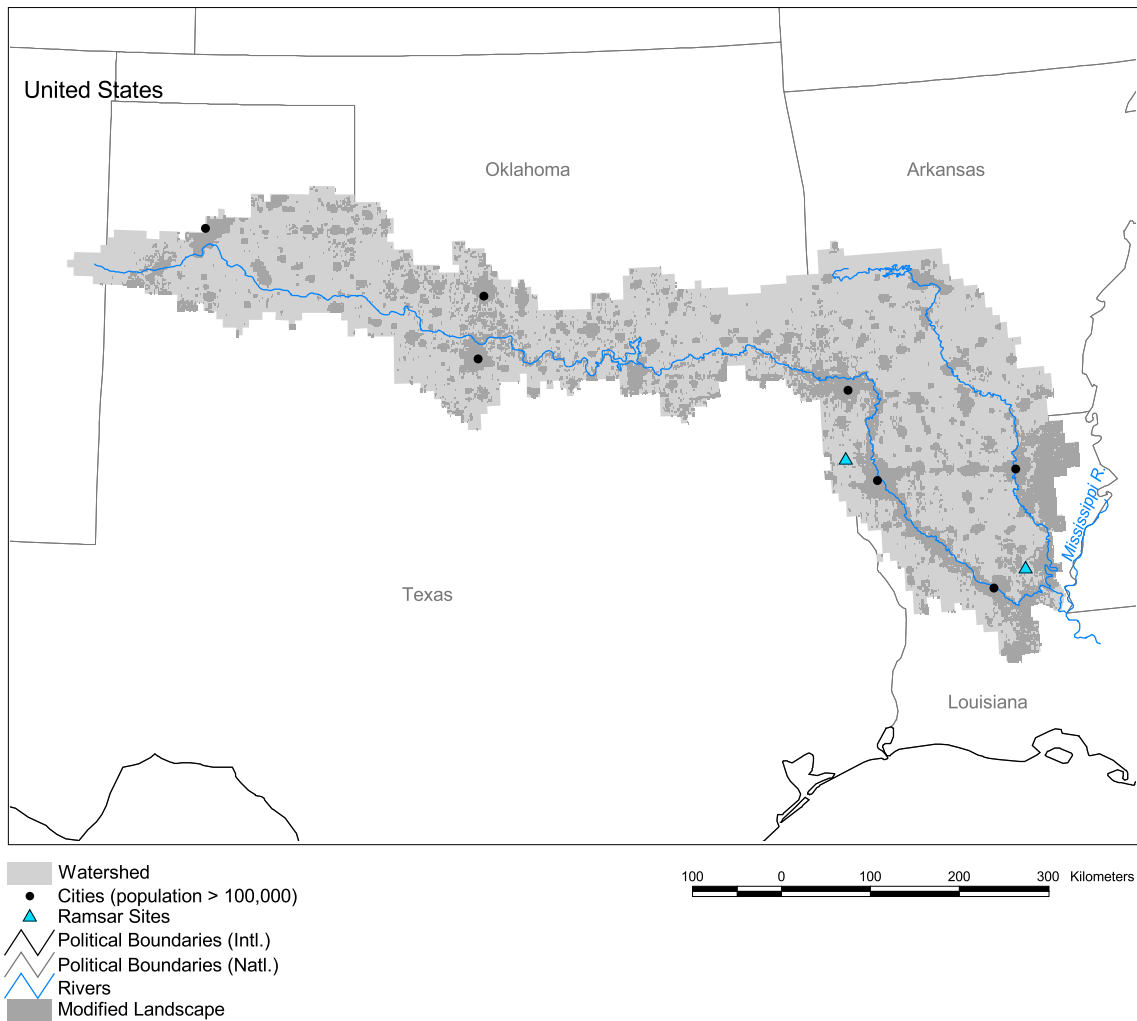


## Mississippi Watershed: Red Subbasin



Basin area: 187,944 km<sup>2</sup>  
 Population density: 14 people per km<sup>2</sup>  
 Urban growth rate: -  
 Large cities: 7  
 Total fish species: 67 (intr: 5 diad: 2)  
 Fish endemics: 0  
 Threatened fish species: 6  
 Endemic bird areas: 0  
 Ramsar sites: 2  
 Protected areas: 1%  
 Wetlands: 7%  
 Arid: 33%

Forest: 42%  
 Cropland: 12%  
 Cropland irrigated: 5%  
 Developed: 13%  
 Shrub: 0%  
 Grassland: 33%  
 Barren: 0%  
 Loss of original forest: 45%  
 Deforestation rate: -  
 Eroded area: 4%  
 Large dams: 101  
 Planned major dams: -

