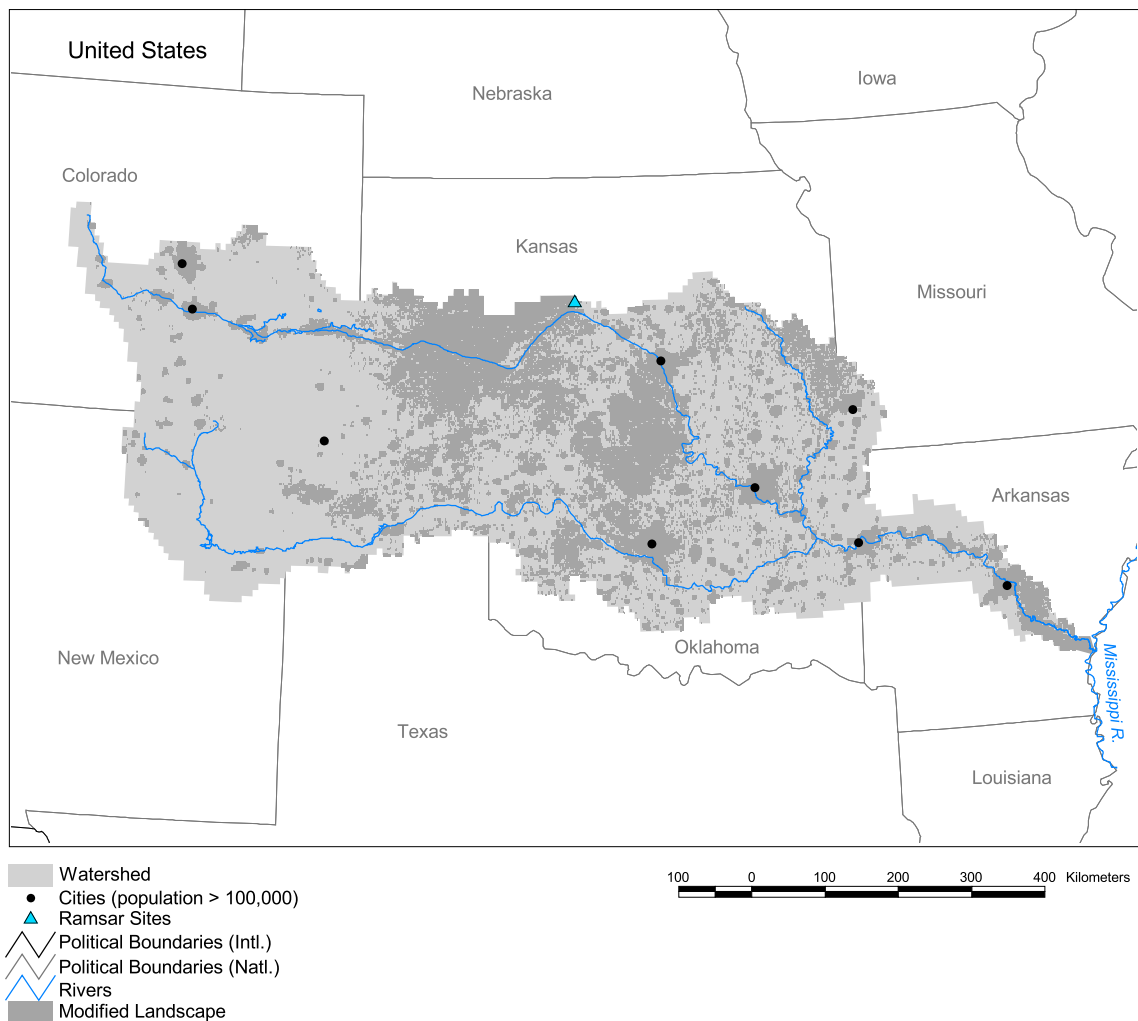


Mississippi Watershed: Arkansas Subbasin



Basin area:	435,122 km ²	Forest:	15%
Population density:	14 people per km ²	Cropland:	17%
Urban growth rate:	1.9%	Cropland irrigated:	9%
Large cities:	9	Developed:	12%
Total fish species:	165 (intr: 21 diad: 2)	Shrub:	6%
Fish endemics:	21	Grassland:	50%
Threatened fish species:	0	Barren:	0%
Endemic bird areas:	0	Loss of original forest:	65%
Ramsar sites:	1	Deforestation rate:	-
Protected areas:	1%	Eroded area:	5%
Wetlands:	2%	Large dams:	387
Arid:	50%	Planned major dams:	-

