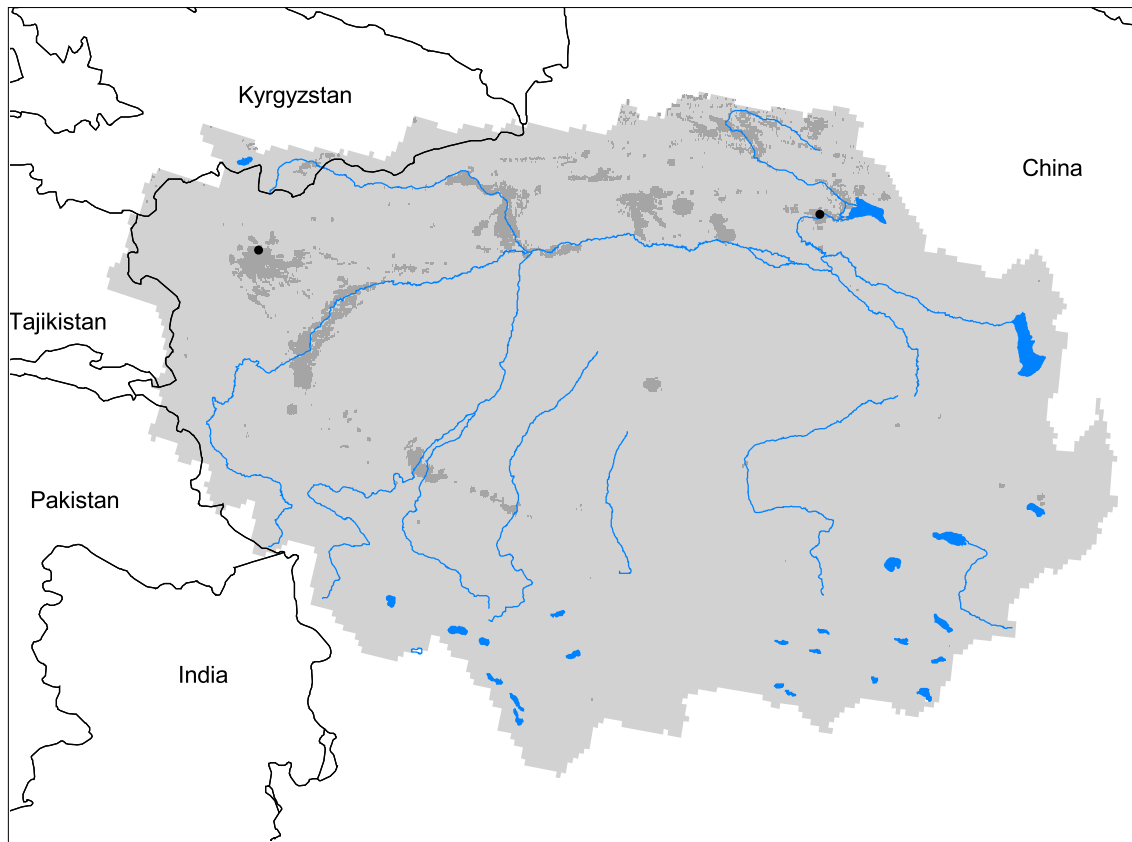


## Tarim Watershed



- Watershed
- Cities (population > 100,000)
- Ramsar Sites
- Political Boundaries (Intl.)
- Political Boundaries (Natl.)
- Rivers
- Modified Landscape

100 0 100 200 300 400 Kilometers

Basin area:	1,152,447 km <sup>2</sup>	Forest:	0%
Population density:	10 people per km <sup>2</sup>	Cropland:	2%
Urban growth rate:	-	Cropland irrigated:	74%
Large cities:	2	Developed:	1%
Total fish species:	14	Shrub:	31%
Fish endemics:	3	Grassland:	5%
Threatened fish species:	0	Barren:	61%
Endemic bird areas:	1	Loss of original forest:	69%
Ramsar sites:	0	Deforestation rate:	-
Protected areas:	21%	Eroded area:	0%
Wetlands:	16%	Large dams:	0
Arid:	61%	Planned major dams:	-

