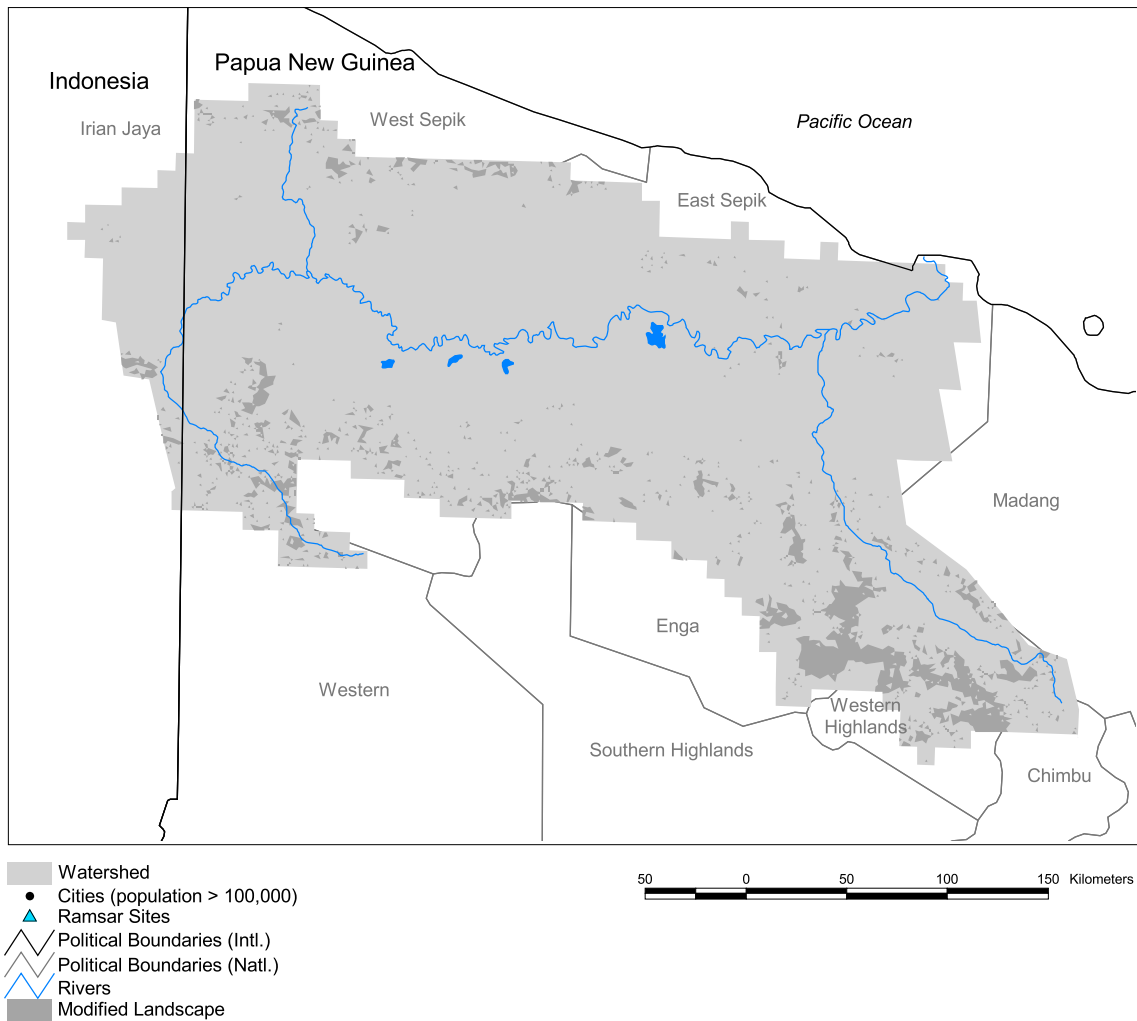


Sepik Watershed



Basin area: 101,821 km²
 Population density: 9 people per km²
 Urban growth rate: -
 Large cities: 0
 Total fish species: 57 (intr: 4 diad: 4)
 Fish endemics: 0
 Threatened fish species: 0
 Endemic bird areas: 3
 Ramsar sites: 0
 Protected areas: 0%
 Wetlands: 33%
 Arid: 0%

Forest: 77%
 Cropland: 7%
 Cropland irrigated: 8%
 Developed: -
 Shrub: 0%
 Grassland: 14%
 Barren: 0%
 Loss of original forest: 24%
 Deforestation rate: 3%
 Eroded area: 0%
 Large dams: 0
 Planned major dams: -

