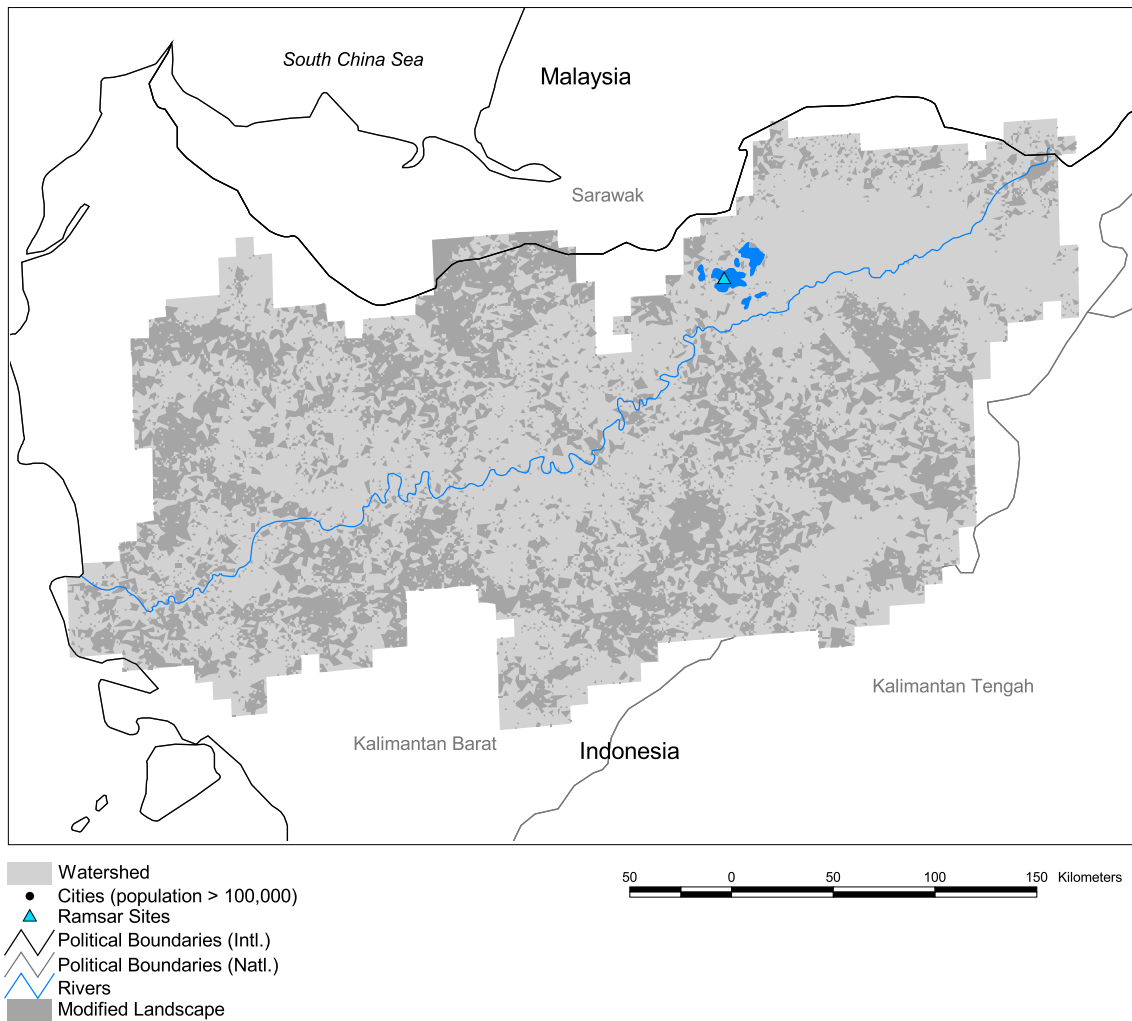


Kapuas Watershed



Basin area:	88,745 km ²	Forest:	65%
Population density:	22 people per km ²	Cropland:	33%
Urban growth rate:	-	Cropland irrigated:	57%
Large cities:	0	Developed:	-
Total fish species:	320	Shrub:	0%
Fish endemics:	35	Grassland:	0%
Threatened fish species:	0	Barren:	0%
Endemic bird areas:	1	Loss of original forest:	47%
Ramsar sites:	1	Deforestation rate:	8%
Protected areas:	6%	Eroded area:	12%
Wetlands:	2%	Large dams:	0
Arid:	0%	Planned major dams:	-

