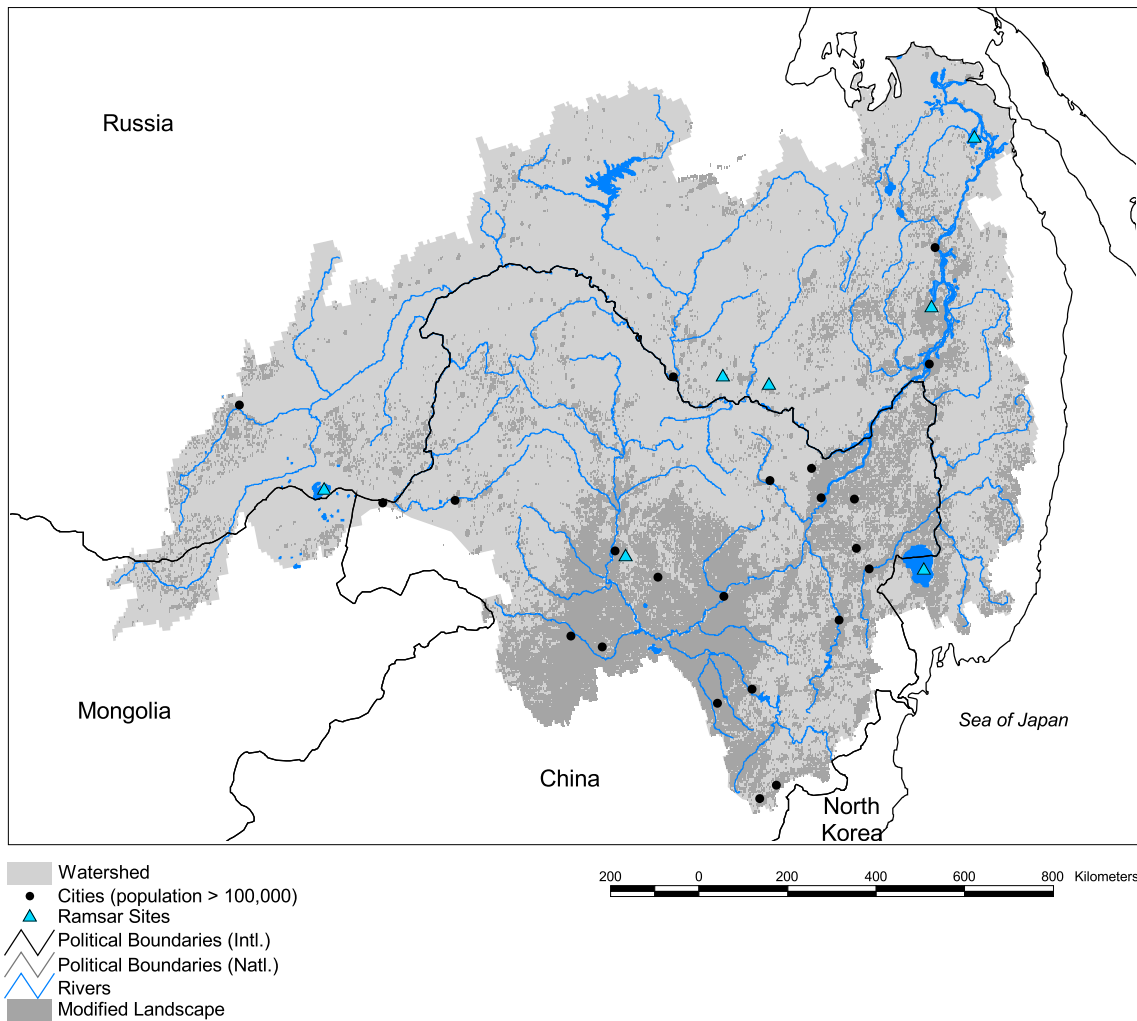


Amur Watershed



Basin area:	1,929,981 km ²	Forest:	68%
Population density:	35 people per km ²	Cropland:	18%
Urban growth rate:	3.0%	Cropland irrigated:	8%
Large cities:	22	Developed:	3%
Total fish species:	120	Shrub:	0%
Fish endemics:	6	Grassland:	8%
Threatened fish species:	2	Barren:	0%
Endemic bird areas:	0	Loss of original forest:	33%
Ramsar sites:	7	Deforestation rate:	-
Protected areas:	2%	Eroded area:	0%
Wetlands:	4%	Large dams:	5
Arid:	15%	Planned major dams:	-

