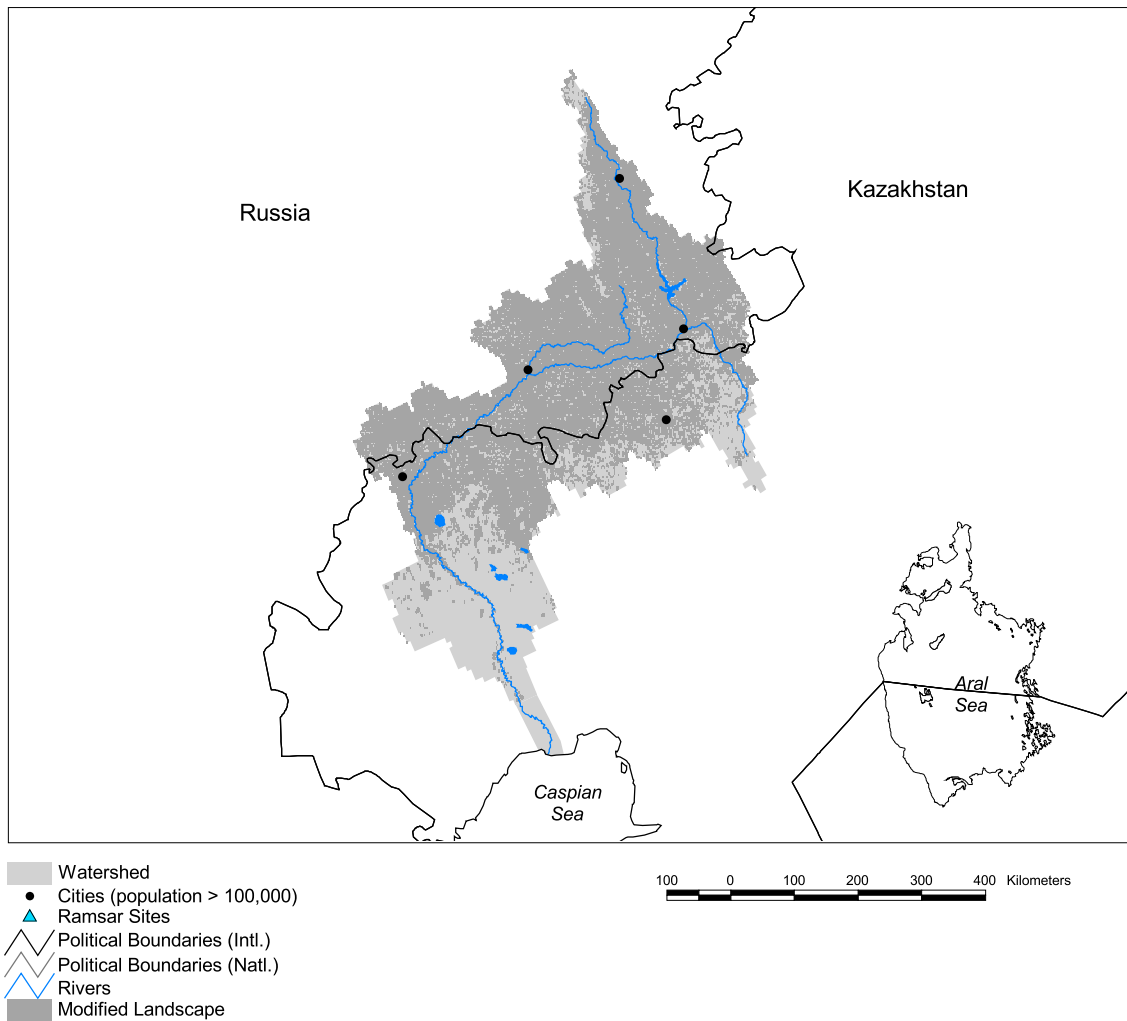


Ural Watershed



Basin area:	244,280 km ²	Forest:	3%
Population density:	13 people per km ²	Cropland:	58%
Urban growth rate:	-	Cropland irrigated:	0%
Large cities:	5	Developed:	6%
Total fish species:	48	Shrub:	0%
Fish endemics:	0	Grassland:	33%
Threatened fish species:	6	Barren:	0%
Endemic bird areas:	0	Loss of original forest:	32%
Ramsar sites:	0	Deforestation rate:	-
Protected areas:	1%	Eroded area:	5%
Wetlands:	0%	Large dams:	1
Arid:	100%	Planned major dams:	-

