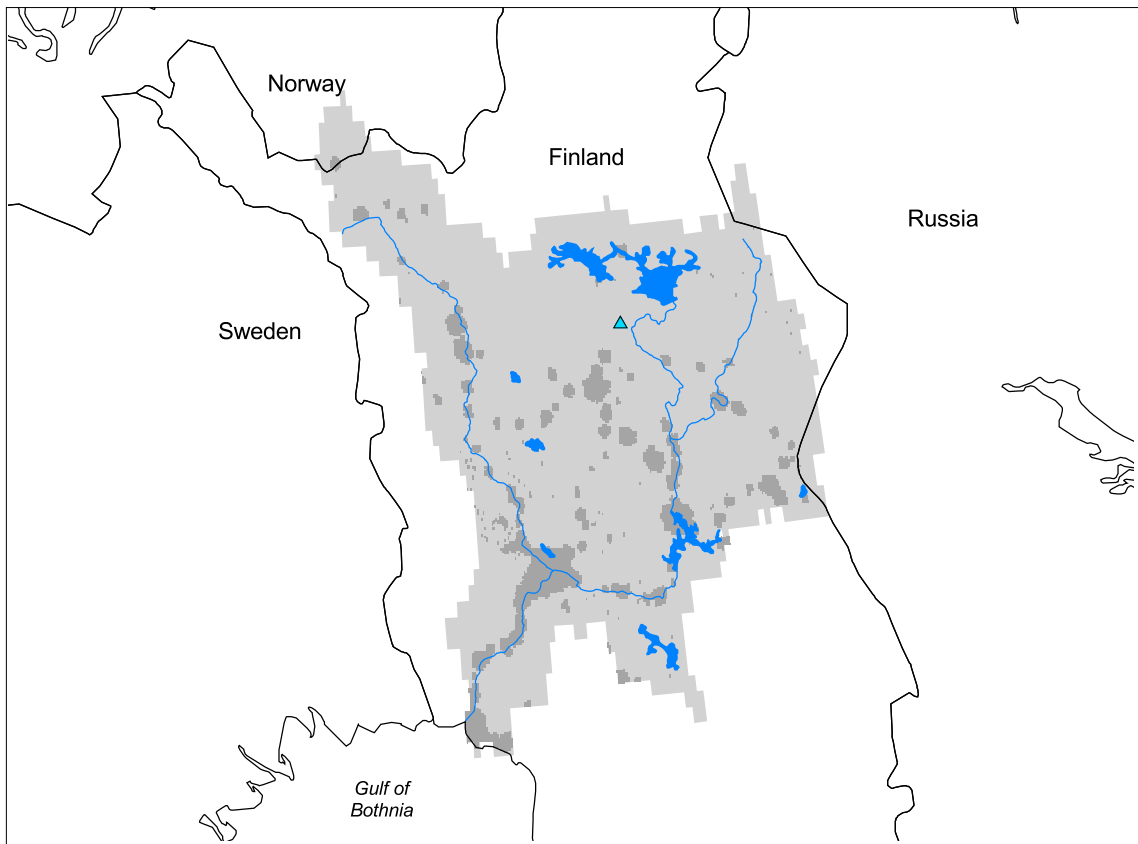


Kemijoki Watershed



- Watershed
- Cities (population > 100,000)
- Ramsar Sites
- Political Boundaries (Intl.)
- Political Boundaries (Natl.)
- Rivers
- Modified Landscape



Basin area:	52,452 km ²	Forest:	76%
Population density:	2 people per km ²	Cropland:	0%
Urban growth rate:	-	Cropland irrigated:	0%
Large cities:	0	Developed:	9%
Total fish species:	31 (intr: 4 diad: 3)	Shrub:	11%
Fish endemics:	0	Grassland:	1%
Threatened fish species:	0	Barren:	0%
Endemic bird areas:	0	Loss of original forest:	3%
Ramsar sites:	1	Deforestation rate:	-
Protected areas:	7%	Eroded area:	0%
Wetlands:	3%	Large dams:	3
Arid:	0%	Planned major dams:	-

