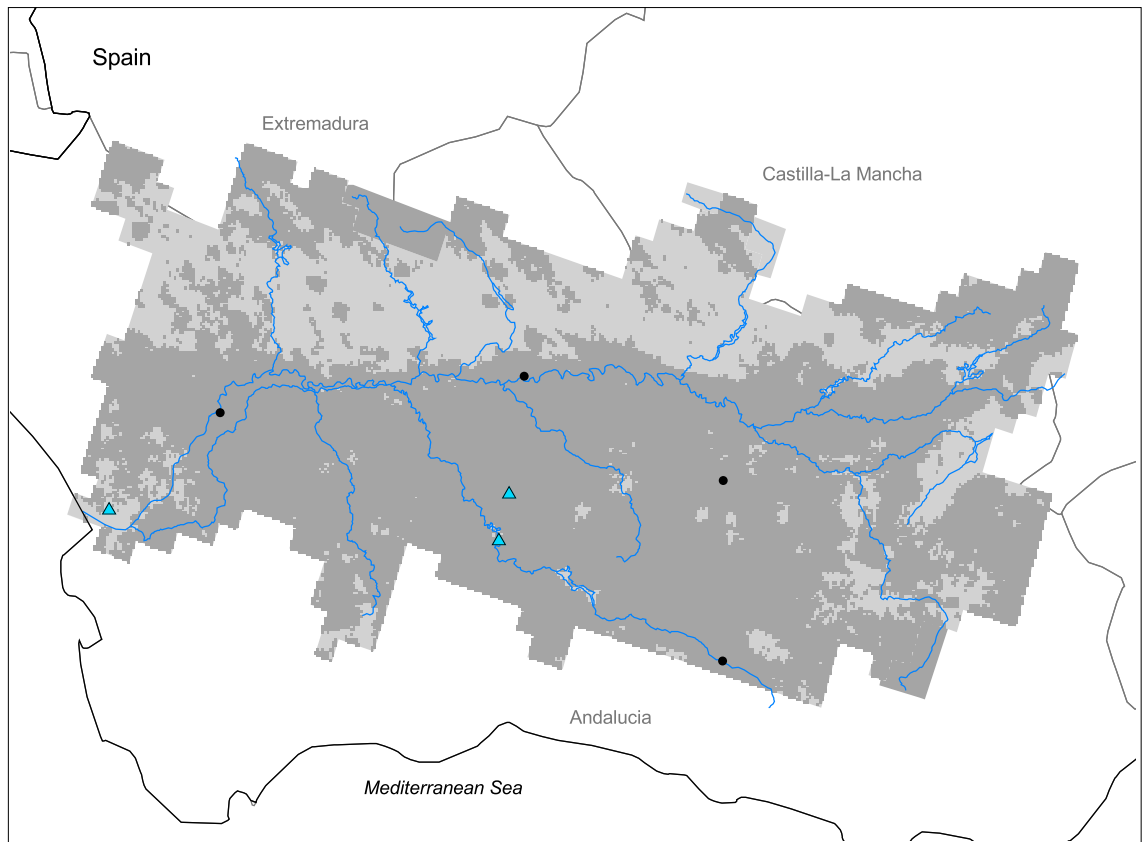


Guadalquivir Watershed



- Watershed
- Cities (population > 100,000)
- Ramsar Sites
- Political Boundaries (Intl.)
- Political Boundaries (Natl.)
- Rivers
- Modified Landscape

50 0 50 100 Kilometers

Basin area:	52,664 km ²	Forest:	3%
Population density:	68 people per km ²	Cropland:	50%
Urban growth rate:	-	Cropland irrigated:	0%
Large cities:	4	Developed:	23%
Total fish species:	29 (intr: 6 diad: 6)	Shrub:	20%
Fish endemics:	1	Grassland:	4%
Threatened fish species:	5	Barren:	0%
Endemic bird areas:	0	Loss of original forest:	96%
Ramsar sites:	3	Deforestation rate:	-
Protected areas:	14%	Eroded area:	18%
Wetlands:	3%	Large dams:	0
Arid:	35%	Planned major dams:	-

