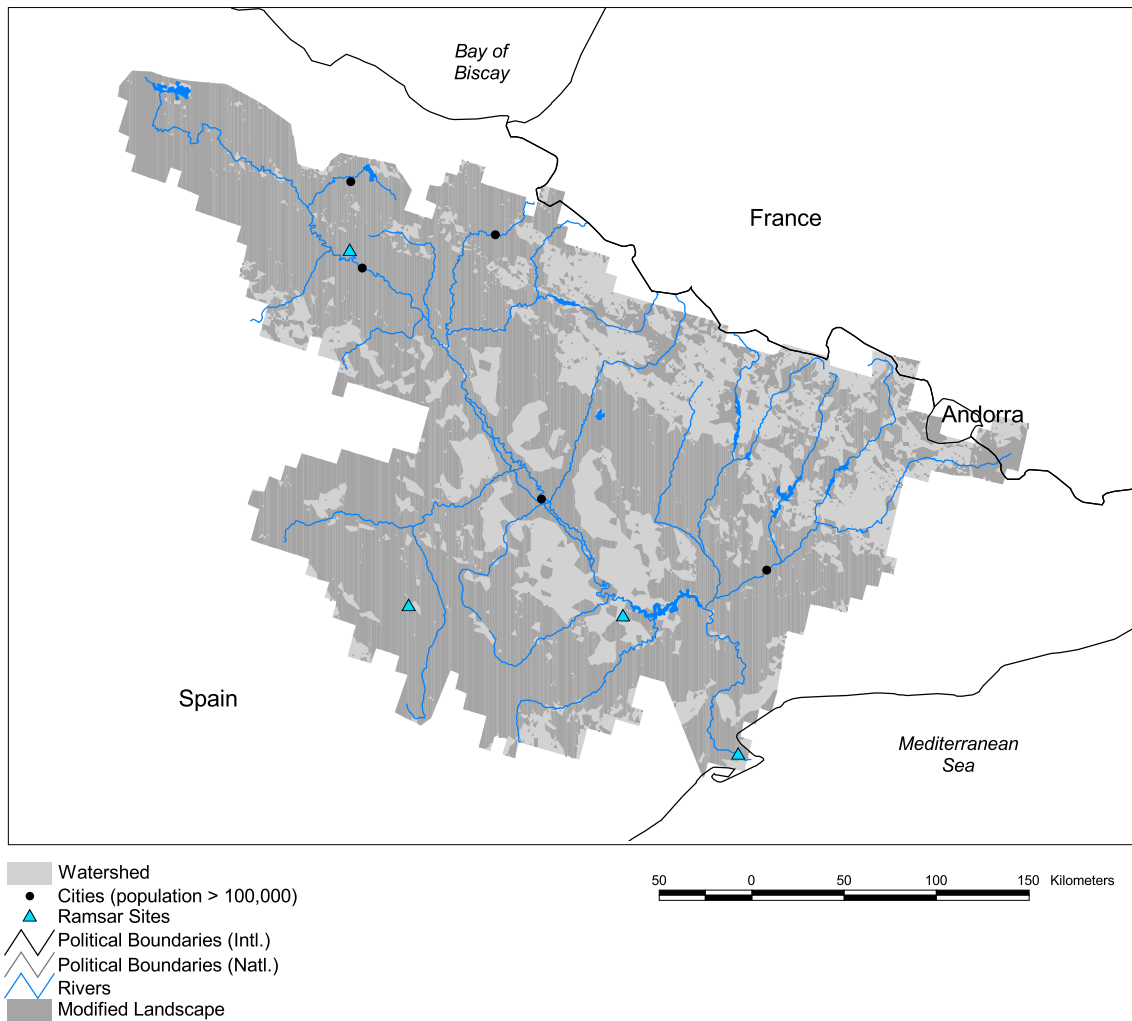


Ebro Watershed



Basin area:	82,593 km ²	Forest:	10%
Population density:	38 people per km ²	Cropland:	57%
Urban growth rate:	-	Cropland irrigated:	0%
Large cities:	5	Developed:	16%
Total fish species:	31 (intr: 6 diad: 6)	Shrub:	14%
Fish endemics:	0	Grassland:	2%
Threatened fish species:	3	Barren:	0%
Endemic bird areas:	0	Loss of original forest:	85%
Ramsar sites:	4	Deforestation rate:	-
Protected areas:	8%	Eroded area:	8%
Wetlands:	1%	Large dams:	1
Arid:	40%	Planned major dams:	-

