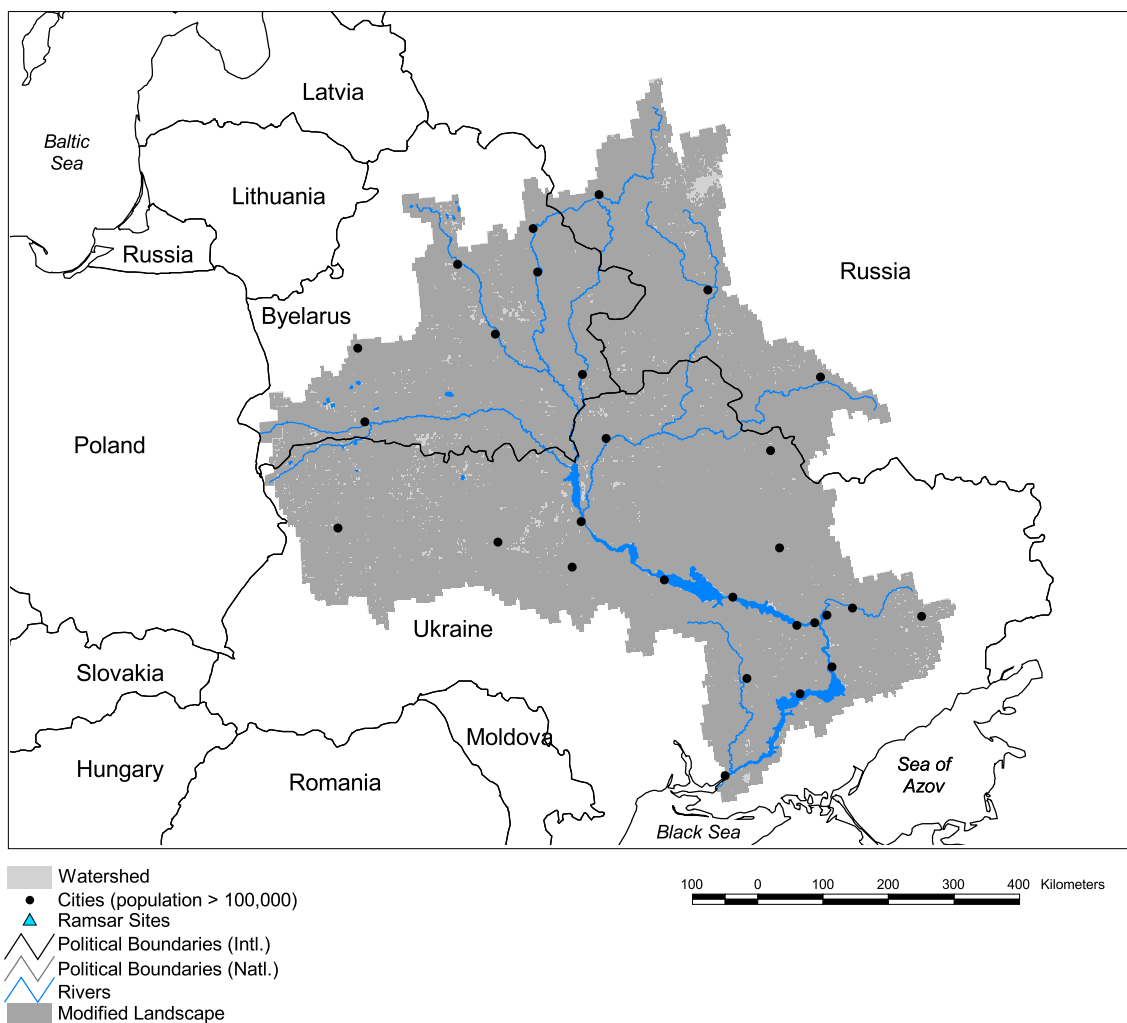


Dnieper Watershed



Basin area:	531,817 km ²	Forest:	3%
Population density:	67 people per km ²	Cropland:	85%
Urban growth rate:	0.4%	Cropland irrigated:	0%
Large cities:	28	Developed:	10%
Total fish species:	50 (intr: 3 diad: 5)	Shrub:	0%
Fish endemics:	1	Grassland:	0%
Threatened fish species:	7	Barren:	0%
Endemic bird areas:	0	Loss of original forest:	78%
Ramsar sites:	0	Deforestation rate:	-
Protected areas:	2%	Eroded area:	8%
Wetlands:	6%	Large dams:	6
Arid:	3%	Planned major dams:	1

