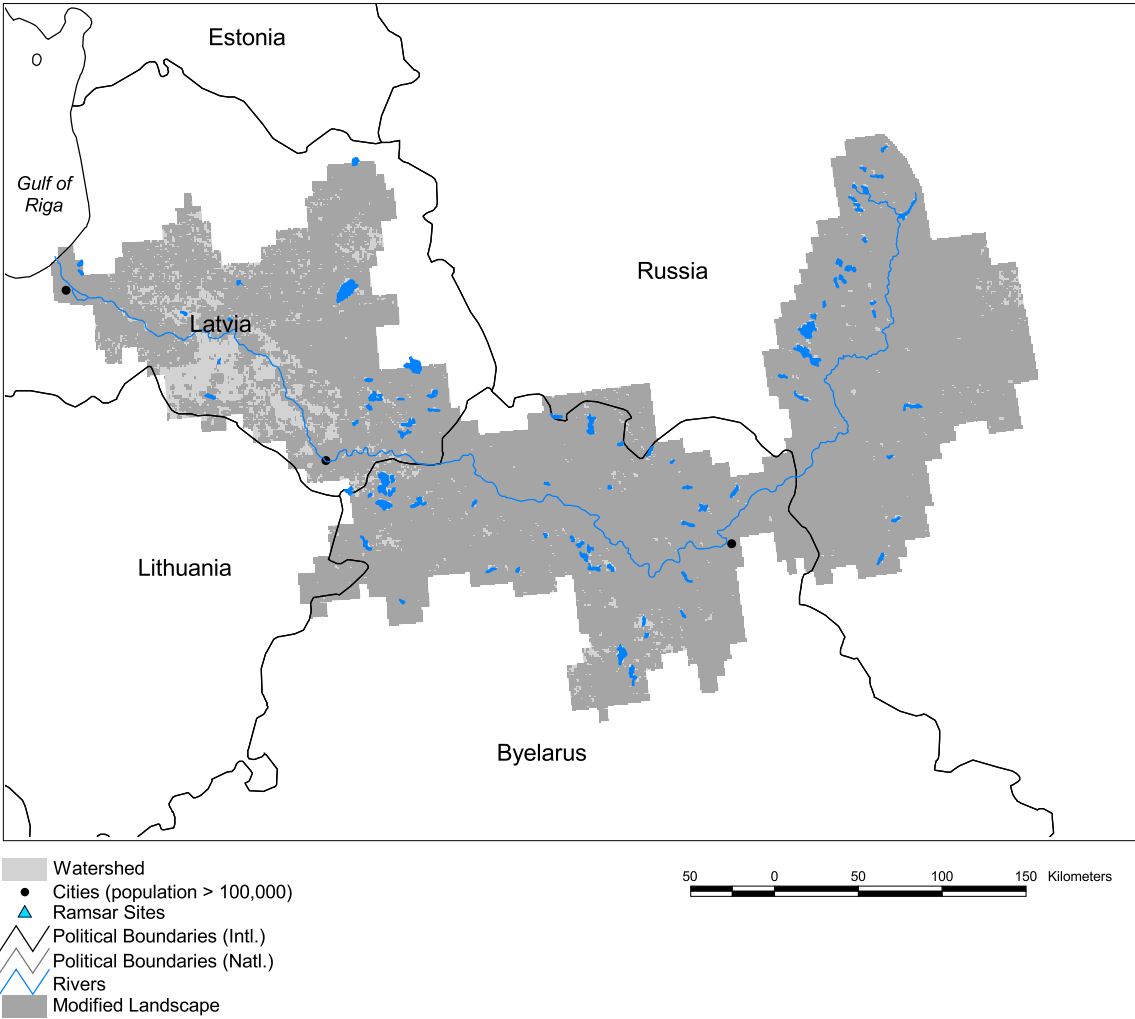


Daugava Watershed



Basin area:	79,406 km ²	Forest:	7%
Population density:	33 people per km ²	Cropland:	84%
Urban growth rate:	0.0%	Cropland irrigated:	0%
Large cities:	3	Developed:	7%
Total fish species:	50 (intr: 6 diad: 8)	Shrub:	0%
Fish endemics:	0	Grassland:	0%
Threatened fish species:	1	Barren:	0%
Endemic bird areas:	0	Loss of original forest:	78%
Ramsar sites:	0	Deforestation rate:	-
Protected areas:	5%	Eroded area:	4%
Wetlands:	3%	Large dams:	0
Arid:	0%	Planned major dams:	-

